

CAMTRACK & CAMTRACK PRO

MULTI-CAMERA VOICE-ACTIVATED SWITCHER

DEVICE CONNECTORS



WHAT'S IN THE BOX

- 1x CAMTRACK or CAMTRACK PRO module
- 4x Rubber feet (pre-mounted)
- 1x Thank You card
- 1x Quick Start Guide

OVERVIEW

Listen. Focus. Switch. Engage.

INOGENI's CAMTRACK is the most flexible, and cost-effective voice-activated multi-camera switcher designed for modern conferencing environments.

CAMTRACK integrates with SHURE microphones to detect the active speaker's voice, triggering PTZ camera presets and AI tracking (when supported). It then communicates with an INOGENI switcher to route the appropriate video feed seamlessly into the conferencing system. The system provides automated camera control and video switching for conference rooms, hybrid meetings, and live events.

Seamless integration and setup



Complete SHURE integration – Works seamlessly with advanced multi-zone microphones (MXA901, MXA920,

MXA710, MXA310, and MXCW conference systems) as well as DSP and software solutions (P300, IntelliMix Room). Each device supports up to 8 audio zones or more, while MXCW conference systems can accommodate up to 125 microphones as a single unit, ensuring accurate speaker tracking and crystal-clear audio and video in hybrid meetings.



+ Any PTZ IP camera

Broad PTZ support – CAMTRACK works with an extensive list of PTZ camera manufacturers, including

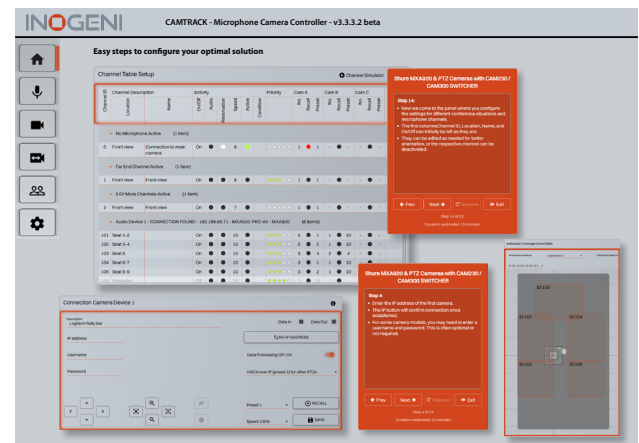
Canon, AVer, Sony, Panasonic, and virtually any PTZ IP camera.



Full INOGENI switcher compatibility – Supports USB, HDMI, NDI, and RTSP cameras, including native CAM230

and CAM300 switchers and NDI sources via IP2USB for seamless integration of all camera types.

Intuitive web-based setup



Smart voice-activated configuration made easy

Simple setup with a step-by-step setup assistant. No programming is required. A built-in, context-sensitive digital guide users through every step of the setup.

Fast deployment: Duplicate and share configurations seamlessly across multiple CAMTRACK devices.

Discover the step-by-step CAMTRACK setup assistant:

- [SHURE MXA920 & 2 PTZ Cameras with CAMTRACK NDI Router Setup](#)
- [SHURE MXA920 & PTZ Cameras with CAMTRACK and CAM230/CAM300 SWITCHER](#)

Intelligent camera orchestration and flexibility

- **Smart multi-camera management** – CAMTRACK intelligently determines the active camera in real time using precise audio localization.

OVERVIEW – CONT.

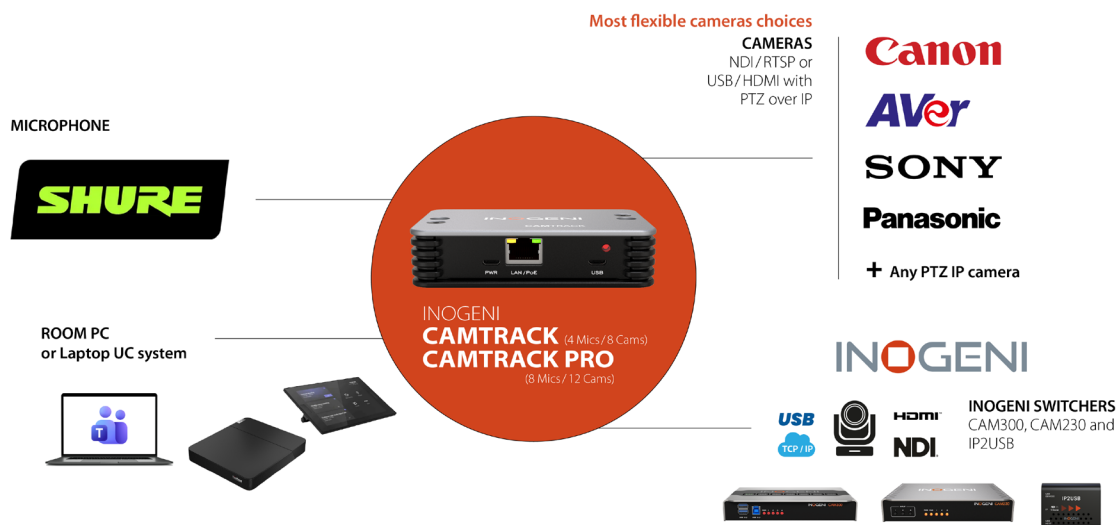
- Full PTZ control and preset-based camera switching with VISCA over IP for seamless transitions. Supports up to 10 customizable room presets for varied configurations, including divisible spaces with the IP2USB NDI/RTSP multi-camera converter.
- **AI tracking transparency** – Enables AI-equipped cameras to engage their auto-framing or tracking features automatically or when a preset is recalled.
- **Flexible power options** – PoE (IEEE 802.3af) or optional Micro-USB power input.
- **Camera tally activation** – Indicator lights show which camera feed is active on supported IP cameras.
- **Compact and versatile design** – Fanless operation and flexible mounting options simplify integration into any AV environment.
- **Flexible communication** – Supports HTTP, WebSocket, and TCP/IP for integration with third-party control systems via API.
- **Tested and compatible by design with major UC systems** and camera manufacturers, such as Crestron, Logitech, Lenovo, Poly, MAXHUB, Jabra, Teams, Zoom, and others.

HOW THE CAMTRACK ECOSYSTEM WORKS

The CAMTRACK ecosystem seamlessly integrates audio and video components into a unified workflow that delivers dynamic, professional-grade videoconferencing. Using SHURE to detect active speakers, CAMTRACK coordinates PTZ cameras over the IP network and interfaces with INOGENI switchers or the IP2USB converter to deliver the appropriate camera view to Room PCs or laptops running software CODECs.

Components of the ecosystem:

- **CAMTRACK** – Central controller managing audio-driven camera switching
- **SHURE microphone** – Detects active speaker zones
- **Multiple PTZ cameras** – Positioned around the room for optimal coverage
- **IP network** – Connects all devices for real-time communication
- **INOGENI switcher or IP2USB converter** – Delivers the video feed to USB, HDMI, or NDI compatible endpoints
- **Videoconferencing** – Room PCs or laptops running software-based meeting platforms (e.g., Microsoft Teams, Zoom, or other soft CODECs).

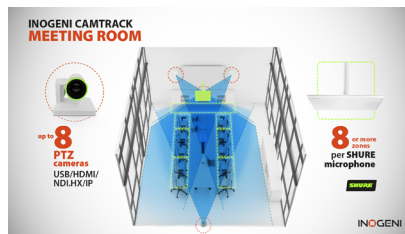
INOGENI CAMTRACK & CAMTRACK PRO
The Most Flexible Voice-Activated Multi-Camera EcosystemEngaging meetings, simplified
Transparent AI tracking, scalable to any room, easy to configure

HOW THE CAMTRACK ECOSYSTEM WORKS – CONT.

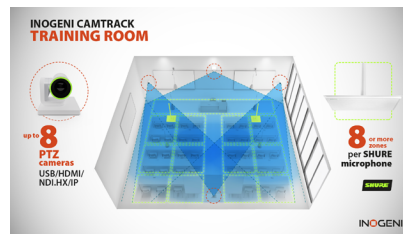
CAMTRACK Applications by Room Type

CAMTRACK accommodates a wide range of needs—from medium corporate meeting rooms and classrooms to large boardrooms, lecture halls, and complex broadcast delegate environments (supporting up to 12 PTZ cameras).

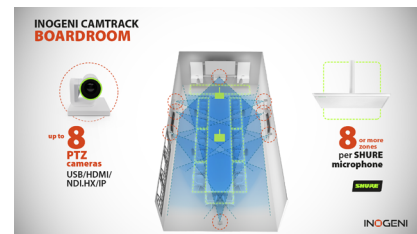
Find your perfect setup: explore 6 room applications



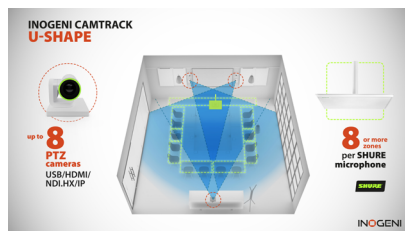
Meeting Room



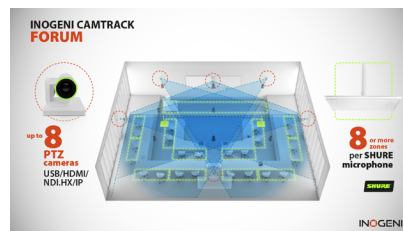
Training Room



Boardroom



U-Shape



Forum



Auditorium

CAMTRACK applications by room type

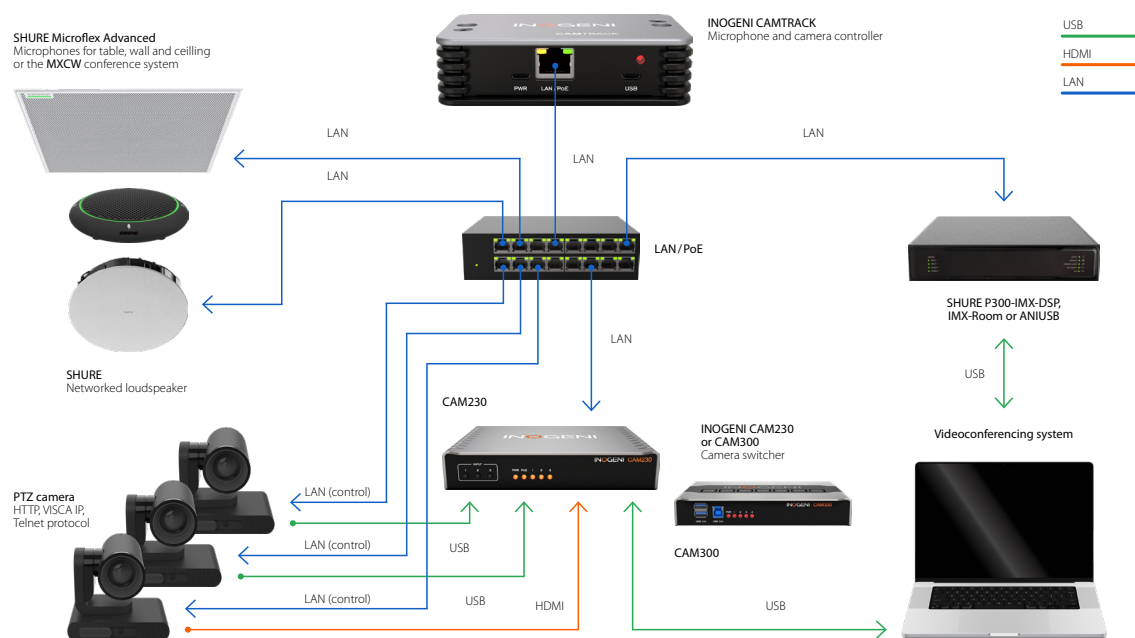
- **Two scalable versions that accommodate a wide range of room sizes:**
 - CAMTRACK: Supports up to 4 SHURE devices and 8 PTZ cameras
 - CAMTRACK PRO: Supports up to 8 SHURE devices and 12 PTZ cameras
- **Corporate spaces:**
 - Medium meeting rooms: 2-4 PTZ cameras
 - Boardrooms/large conference rooms: 4-8 PTZ cameras
 - Large spaces: 8-12 cameras
- **Educational spaces:**
 - Classrooms: 2-4 PTZ cameras
 - Auditoriums/lecture halls: 2-8 PTZ cameras
 - Divisible spaces: 4-12 PTZ cameras
- **Broadcast and live events:**
 - Stages/live productions: 2-12 PTZ cameras
 - Houses of worship/large events: 2-12 PTZ cameras
 - Delegate environments: 6-12 PTZ cameras

FEATURED CONNECTORS

Seamless IP-driven videoconferencing

CAMTRACK automates AV workflows for smooth, dynamic meetings in three simple steps:

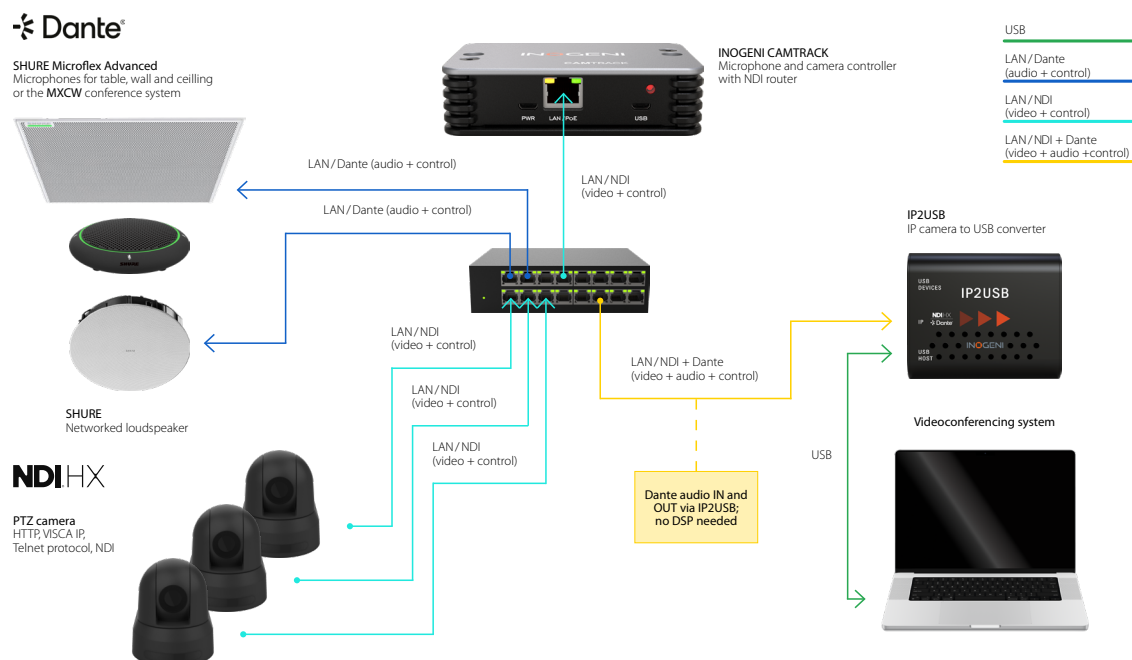
1. **Voice-triggered switching** – Detects active speaker zones through **SHURE microphones**.
2. **Automated control** – CAMTRACK selects the appropriate **USB/HDMI PTZ camera**, preset, or AI tracking mode.
3. **Instant feed delivery** – INOGENI **switcher** routes or converts the video signal directly to USB for **Room PCs** or **videoconferencing systems**.



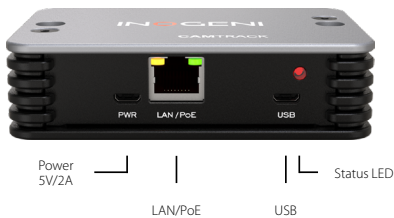
Seamless IP-to-USB videoconferencing

CAMTRACK automates your AV workflows for smooth, dynamic meetings in three simple steps:

1. **Voice-triggered switching** – Detects active speaker zones through **SHURE** microphones.
2. **Automated control** – Selects the appropriate NDI/RTSP **PTZ camera**, preset, or AI tracking mode.
3. **Instant feed delivery** – The **INOGENI IP2USB** converts NDI/RTSP video streams directly to USB for **Room PCs** or videoconferencing systems.



DEVICE INTERFACES



TECHNICAL SPECIFICATIONS

HARDWARE	
Control interface	10/100 Mbps Ethernet Interface
Power supply options	IEEE 802.3af PoE Class 0 – 15W – or – Micro USB 5V/2A
USB	Micro USB 2.0 OTG for service purpose
Mounting	5 mm (0.20 in) holes (2) at a distance of 88 mm (3.46 in) DIN rail adapter for control cabinet installation (optional)

CONTROL / COMPATIBILITY	
Protocols	HTTP/HTTPS/TCP/IP / WebSocket
Supported camera switchers	INOGENI CAM300 and CAM230 INOGENI IP2USB
Supported microphones	SHURE MXA901, MXA910, MXA920, MXA710, and MXA310 microphones SHURE INTELLIMIX® P300, ANIUSB-MATRIX, and INTELLIMIX® ROOM Software. SHURE MXCW conference system SHURE Microflex Wireless, Microflex Wireless neXt2, neXt4 and neXt8 SHURE MXA-MUTE button

CERTIFICATIONS	
Certifications	FCC, CE, UKCA, RoHS, SoV
TAA-compliant	Yes

PHYSICAL DETAILS	
Dimensions (W x L x H)	10.7 cm x 7.0 cm x 2.90 cm 4.21" x 2.76" x 1.14"
Weight	325 g (0.72 lb)
Package content	1x CAMTRACK module 4x Rubber feet (pre-mounted) 1x Thank You card 1x Quick Start Guide
Accessories	Mountable/removable rubber feet for setting up in rack trays, on tabletops or similar
Operating temperature	0°C to 45°C / 32°F to 113°F
Storage temperature	-40°C to 105°C / -40°F to 221°F
Relative humidity	0% to 90% non-condensing

INFORMATION	
CAMTRACK - UPC code	051497480448
CAMTRACK PRO - UPC code	051497515140
Origin	Canada
Warranty	5 years

EDITIONS	
Standard	Supports up to 4 audio devices (Microphones/audio-DSP) and Supports up to 8 cameras
Pro	Supports up to 8 audio devices (Microphones/audio-DSP) and Supports up to 12 cameras

For technical support, contact us at support@inogeni.com



Copyright © 2025/12 INOGENI | All Rights Reserved. INOGENI name and logo are trademarks or registered trademarks of INOGENI. Use of this product is subject to the terms and conditions of the license and limited warranty in effect at the time of purchase. Product specifications can change without notice.

inogeni.com