

INOGENI SHARE 2

Dual Video Mixer to USB 3.0 Converter User Guide v1.6



Thank you!

You have just acquired the finest and easiest to use tool for simultaneous capture of two streams of uncompressed video with audio for your computer.

Easy, No Drivers, No Setup !
Versatile !
Compatible with all Apps !

SHARE2 CONVERTER

P/N SHARE2

PRODUCT HIGHLIGHTS

- EASY ! No drivers required.
- Dual Uncompressed 1080p Video & Audio Capture
- Predefined Picture in Picture (PIP) views.
- Ideal for Video streaming and Videoconferencing
- Compatible to all motherboards and chipsets
- Up to 1080p at 60 fps
- Powered via external power supply.
- Scaler and Colorspace Conversion
- Supports Windows, OSX and Linux.
- DirectShow, AVFoundation and V4L2 Compatible
- Professional grade full-metal enclosure

OVERVIEW

The **INOGENI SHARE2 Converter** is the most easy and reliable tool for simultaneous capture of two streams of uncompressed video into one single USB stream with audio from your HDMI/DVI/VGA/Component or CVBS sources for your PC for recording, videoconferencing, lecture capture and streaming applications. No driver installation is necessary and it will work on all motherboards and USB 3.0 chipsets. It features an HDMI, DVI and a NTSC/PAL input, a line level stereo analog input, a line level stereo analog output, an internal USB 3.0 hub with 2x USB 3.0 ports for expansion purposes and USB 3.0 connector for the host. It supports SD and HDTV video formats, up to 1080p60, and most computer graphic formats. Compact in size and rugged, the converter is a practical and an easy-to-use USB 3.0 capture solution. It is compatible with Windows, OSX and Linux operating systems, and is UVC-compliant, so it will work with all DirectShow/V4L2 and AVFoundation compatible software.

The converter supports 1080p resolutions up to 60 fps. All SD and HD resolution signals are converted to 4:2:2 8-bit color space over USB 3.0. The line level stereo analog audio input and output are two-channel LPCM.

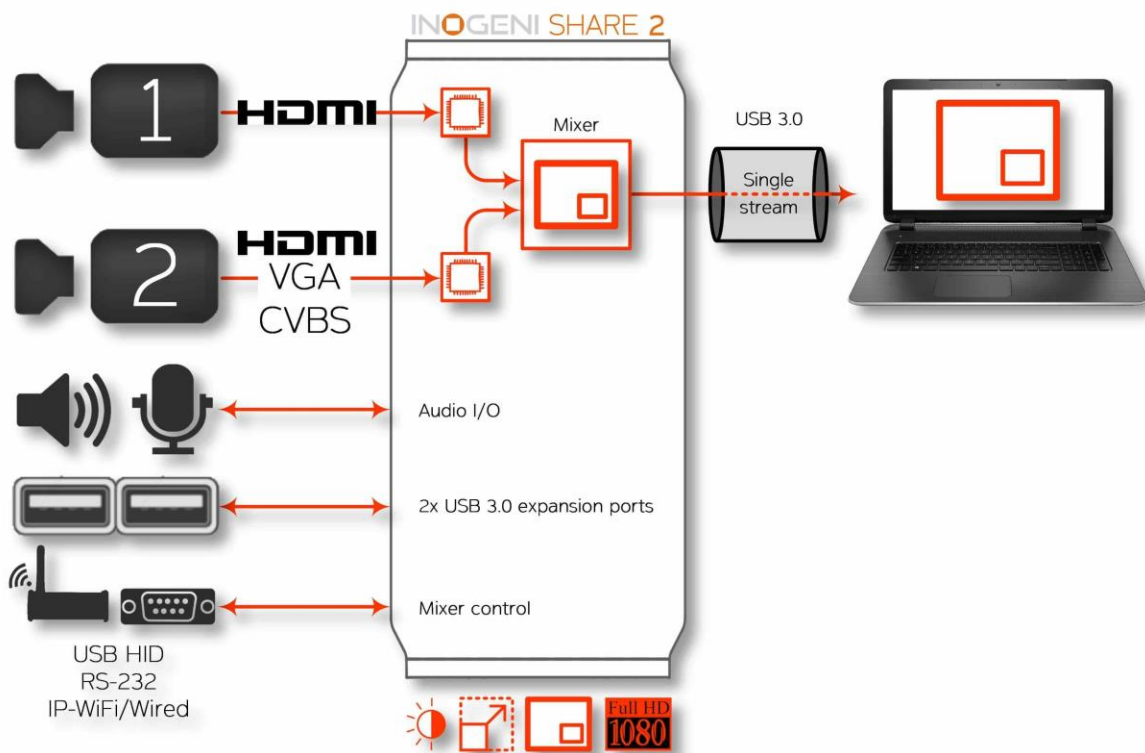
SHARE2 comes with a USB 3.0 cable, a DVI to VGA and DVI to HDMI adapters.

- Line level stereo audio support
- Predefined Picture in Picture (PIP) views
- Digital Fluid technology - Internal frame buffers maximize frame rate with any PC
- Hardware-based color space and sampling conversion
- Automatic scaling and frame rate conversion
- Customizable video processing functions
- Image controls: Brightness, contrast, saturation and hue settings
- Supports multiple devices on the same PC.
- Compatible with Windows, Mac OSX, and Linux.

DEVICE CONNECTORS



CONNECTION DIAGRAM



SPECIFICATIONS

Video Input 1	
Connector	1 x HDMI
Video Resolutions	1080p, 720p, 1080i, 480p, 576p, 1920x1200, 1280x1024, 1280x960, 1024x768, 800x600, 640x480
Video Input 2	
Connector	1 x DVI-I – Digital & Analog
Video Resolutions	DVI: 1080p, 720p, 1080i, 480p, 576p, 1920x1200, 1280x1024, 1280x960, 1024x768, 800x600, 640x480 VGA: 1080p, 720p, 480p, 576p, 1920x1200, 1680x1050, 1400x1050, 1600x1200, 1280x1024, 1360x768, 1280x768, 1280x800, 1024x768, 800x600, 640x480 Component: 1080p, 1080i, 720p, 480p, 480i, 576p and 576i CVBS: 480i, 576i <i>[Available on green connection of a DVI to Component adapter]</i>
Frame Rates	Up to 60 Hz, all formats
Color Space	RGB, YCbCr 4:4:4 and 4:2:2
Sampling Rate	165 MHz
Analog input	Analog stereo, line level, 3.5mm jack.
Analog output	Analog stereo, line level, 3.5mm jack.
HDCP Copy protection	The device will not decrypt BD/DVD movies, satellite/cable receivers or other encrypted sources.
Mixer Control	The Mixer feature can be controlled by the following interfaces: HID RS-232 Keypad INOGENI REMOTE LAN

Output	
Connector	1 x USB 3.0 to host
Color Space	YCbCr (YUY2) 4:2:2 8-bit
Video Scaler	Automatic hardware based
Color Space Conversion	Automatic hardware based
Sampling Conversion	Automatic hardware based
Frame Rate Conversion	Automatic hardware based
USB expansion	2 x USB 3.0 ports for expansion purposes. The devices connected will appear to the host.

Audio	
Audio input	2-channel LPCM 48kHz audio from Line input or embedded in HDMI
Audio output	2-channel LPCM 48kHz audio Line level

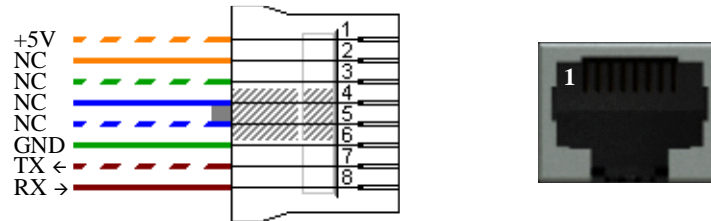
Compatibility	
Operating System	NO driver installation necessary. Windows 7 and above (32/64-bit) OSX 10.10 and above Linux (kernel v2.6.38 and above) Android
Host Requirements	USB 3.0 port Minimum 4GB RAM Intel Core i5 Graphic card with its own memory for on-screen rendering applications.
Motherboard	Compatible with all motherboards Intel, Renesas, ASMedia, and Fresco Logic
Cameras Supported	Cameras and camcorders with an HDMI/DVI, VGA or CVBS output
Software Compatibility	UVC-compliant Runs with all software compatible to DirectShow, V4L2, QuickTime and AVFoundation.
Adapters included	DVI to VGA and DVI to HDMI adapters
Dimensions [W x L x H, cm]	18.5 x 11 x 3
Weight [g]	466
Power	12V, 500mA (adapter included)
UPC Code	040232355523
Origin	Canada
Harmonized Code	8517.62.000.900

SERIAL COMMUNICATION PROTOCOL

The device supports multiple baud rates. The baud rate is programmed using the HID interface.

- 9600 baud [default]
- 19200 baud
- 38400 baud

RJ45 cable pinout



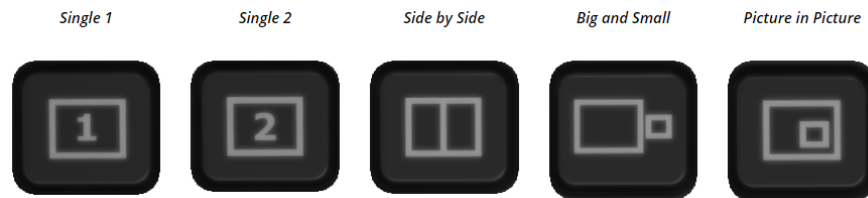
Commands

If the commands are recognized, the “**ACK**” string will be sent.

If the commands are NOT recognized, the “**NACK**” string will be sent.

Input 1 is the **HDMI** stream.

Input 2 is the **DVI** or **composite** stream.



Commands sent to the serial interface must have the ‘<’ character at the beginning and ‘>’ character at the end.

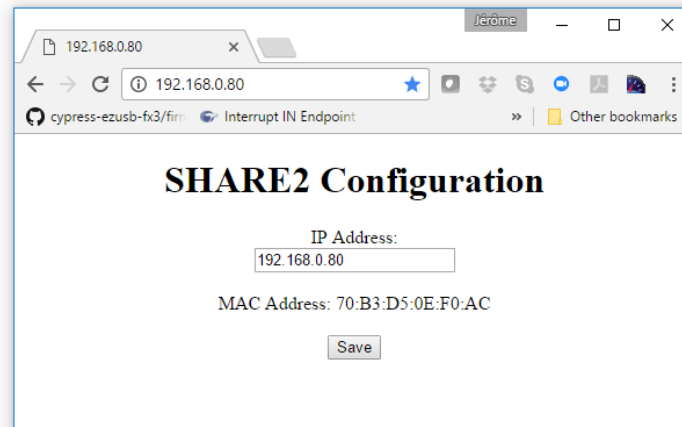
COMMAND	Command description
<S1>	Source 1, which comes from the HDMI connector
<S2>	Source 2, which comes from the DVI or RCA connector
<SS>	Side by Side View
<BS>	Big and Small View
<PPTR>	Picture in Picture at top right corner
<PPTL>	Picture in Picture at top left corner
<PPBR>	Picture in Picture at bottom right corner
<PPBL>	Picture in Picture at bottom left corner
<SW>	Swap View
<SS1>	Side by Side View where Input 1 is at the left side
<SS2>	Side by Side View where Input 2 is at the left side
<BS1>	Big and Small View where Input 1 is at the left side
<BS2>	Big and Small View where Input 2 is at the left side
<PPTR1>	Picture in Picture at top right corner where Input 1 is the background
<PPTR2>	Picture in Picture at top right corner where Input 2 is the background
<PPTL1>	Picture in Picture at top left corner where Input 1 is the background
<PPTL2>	Picture in Picture at top left corner where Input 2 is the background
<PPBR1>	Picture in Picture at bottom right corner where Input 1 is the background

<PPBR2>	Picture in Picture at bottom right corner where Input 2 is the background
<PPBL1>	Picture in Picture at bottom left corner where Input 1 is the background
<PPBL2>	Picture in Picture at bottom left corner where Input 2 is the background
<SAVE>	Save the current configuration onboard for future use
<RSTR>	Erase the current configuration onboard and return to default values
<BLK>	Black video
<SHW>	Show video
<RST>	Reset the device
<POLL>	Returns the current view of the device. In case PPTL1 mode is active, you will receive: >> <POLL> PPTL1 BLACK [enabled/disabled] ACK
<GET>	Return the firmware versions and video resolutions of CAM and CONT inputs. Here is an example. >> <GET> FX3 => 1.8 FPGA => 1.9 EDID => 1 CAM => 1920x1080@60fps CONT => Not locked VIEW => PPTL1 BLACK [enabled/disabled] ACK

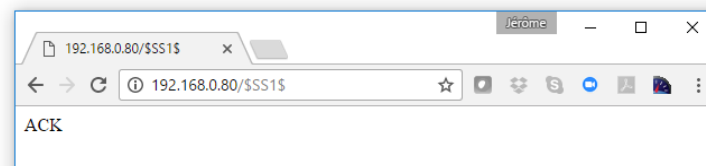
LAN INTERFACE

The device supports a LAN interface. The default IP address of the device is **192.168.0.80** and is ready to communicate. If your router is on the same subnet as this IP address, you will be ready to use the LAN interface of the device. If not, you must use an Ethernet switch that has the same subnet of the device in order to change the device IP address.

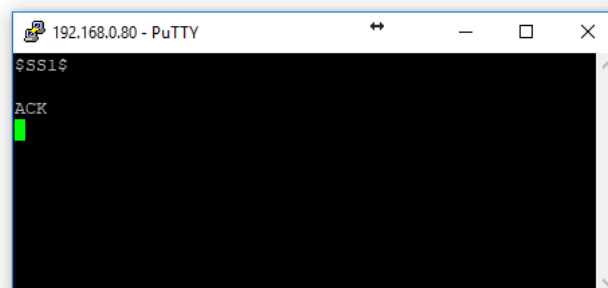
You can access the web server of the device by using any web browser and the SHARE2 Configuration webpage will appear.



You can use the commands by sending HTTP or TCP requests. For example, you can send an HTTP request by sending it using any browser to 192.168.0.80/COMMAND. If the command is recognized, you will receive the ACK string.



You can also use any telnet application in order to communicate with the device using TCP. Make sure to use the right IP address and **port 50000**.



Commands sent to the serial interface must have the '\$' character at the beginning and '\$' character at the end.

COMMAND	Command description
\$S1\$	Source 1, which comes from the HDMI connector
\$S2\$	Source 2, which comes from the DVI or RCA connector
\$SS\$	Side by Side View
\$BS\$	Big and Small View
\$PPTR\$	Picture in Picture at top right corner
\$PPTL\$	Picture in Picture at top left corner
\$PPBR\$	Picture in Picture at bottom right corner
\$PPBL\$	Picture in Picture at bottom left corner
\$SW\$	Swap View
\$SS1\$	Side by Side View where Input 1 is at the left side
\$SS2\$	Side by Side View where Input 2 is at the left side
\$BS1\$	Big and Small View where Input 1 is at the left side
\$BS2\$	Big and Small View where Input 2 is at the left side
\$PPTR1\$	Picture in Picture at top right corner where Input 1 is the background
\$PPTR2\$	Picture in Picture at top right corner where Input 2 is the background
\$PPTL1\$	Picture in Picture at top left corner where Input 1 is the background
\$PPTL2\$	Picture in Picture at top left corner where Input 2 is the background
\$PPBR1\$	Picture in Picture at bottom right corner where Input 1 is the background
\$PPBR2\$	Picture in Picture at bottom right corner where Input 2 is the background
\$PPBL1\$	Picture in Picture at bottom left corner where Input 1 is the background
\$PPBL2\$	Picture in Picture at bottom left corner where Input 2 is the background
\$SAVE\$	Save the current configuration onboard for future use
\$RSTR\$	Erase the current configuration onboard and return to default values
\$BLK\$	Black video
\$SHW\$	Show video
\$RST\$	Reset the device
\$POLL\$	Returns the current view of the device. In case PPTL1 mode is active, you will receive: PPTL1 BLACK [enabled/disabled] ACK
\$GET\$	Return the firmware versions and video resolutions of CAM and CONT inputs. Here is an example. FX3 => 1.8 FPGA => 1.9 EDID => 1 CAM => 1920x1080@60fps CONT => Not locked VIEW => PPTL1 BLACK [enabled/disabled] ACK

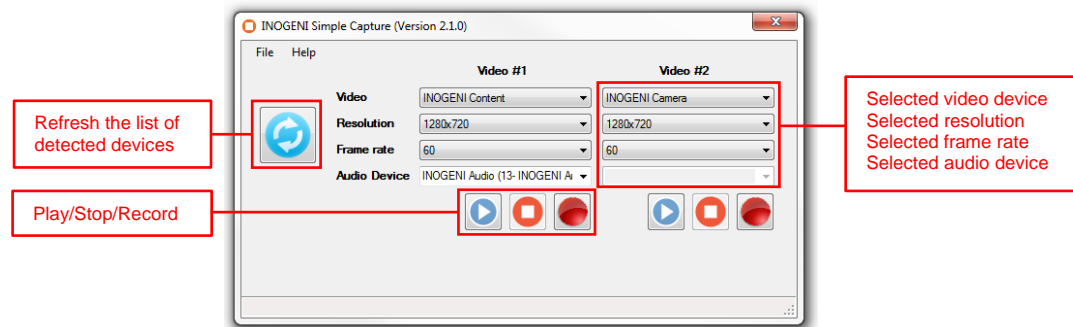
INOGENI SOFTWARE SUITE

Eager to try it now? Simple as 1-2-3!

- 1- Connect the USB 3.0 cable to your computer
- 2- Connect any type of video source
- 3- Run your App or Download **INOGENI Software Suite**

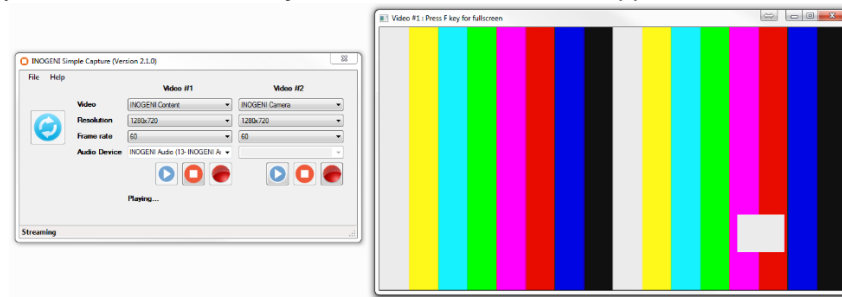
You can use our **INOGENI Software Suite** in order to preview and record your video sources.

1. You can open the **INOGENI Simple Capture** application.



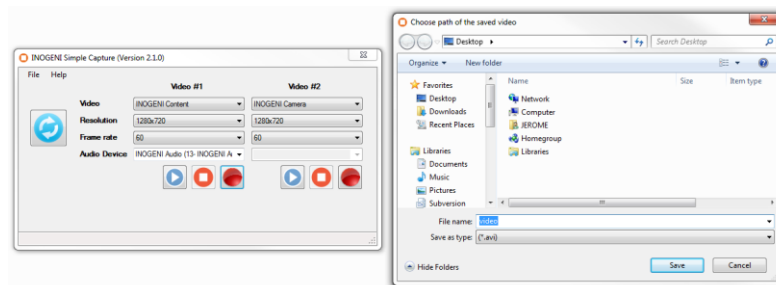
You will then have to use which video device, the resolution and the frame rate to use for the preview/capture. Optional audio source can be selected.

2. To preview, you can click on the **Play** button and a window will appear with the video content.

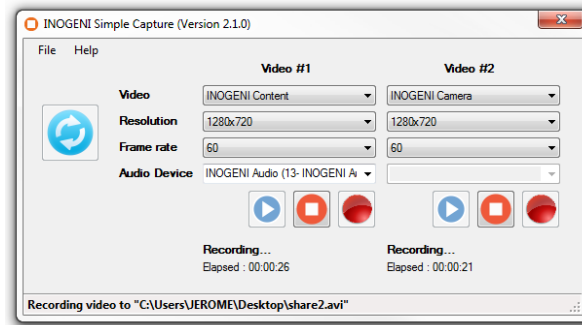


You can click the **Stop** button to quit the preview mode or close the preview window.

3. If you want to capture to a file, you can click on the **Record** button and the application will ask you where to save the file to.



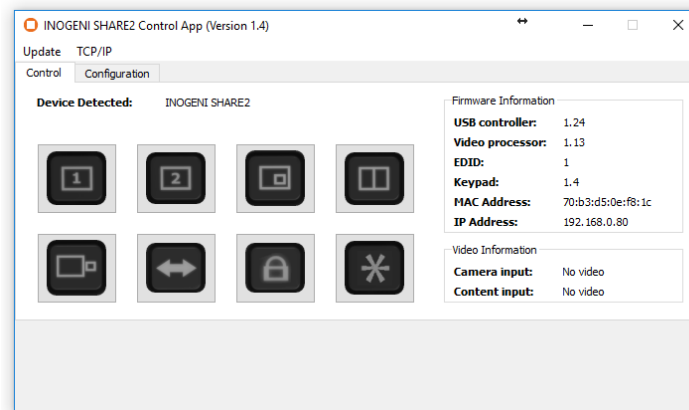
- The application will then record your video sources. The length of the recording will also be available in the application.



You can also use our INOGENI Simple Viewer which only offers a single preview of a video and audio sources.

INOGENI CONTROL APP

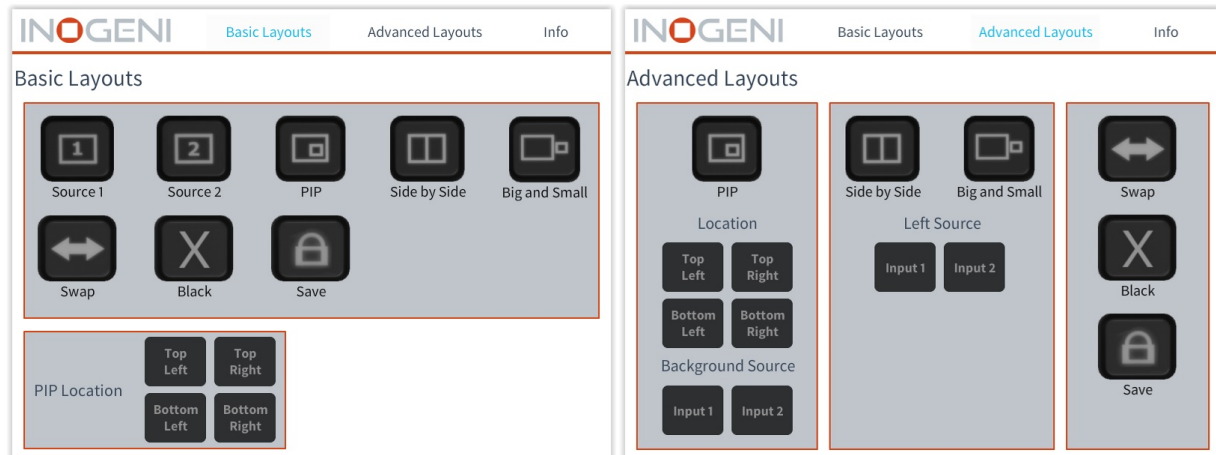
The INOGENI SHARE2 Control App allows you to control and monitor video sources.



The device has its own application in order to control the Mixer configuration using the USB HID or the LAN interfaces. You can also monitor the firmware versions installed on the device and the status of the Camera and Content inputs. You can update your device to the latest firmware using the Update menu. The C++ source code of this application is available on demand. Visit the Software Update page under the INOGENI SHARE 2 section for more details.

CRESTRON MODULES

You can use the Crestron modules in order to control the INOGENI SHARE2 device using the serial or the IP connections. These modules are available on our website under the section Software Update. Refer to the Help file on how to use the modules.



SUPPORT

Engineered by video professionals, for video professionals, it is your most compatible USB 3.0 device. INOGENI expertise at your fingertips:

- **Expert Technical Support team** at support@inogeni.com for immediate help or if you have any technical question about our products.
- **INOGENI Software Suite** to start capturing quickly with your INOGENI device. Please visit www.inogeni.com/support for more details.
- Extensive **Knowledge Base** to learn from other customers experiences.

© Copyright 2017 by INOGENI INC. All Rights Reserved.

INOGENI name and logo are trademarks or registered trademark of INOGENI. Use of this product is subject to the terms and conditions of the license and limited warranty in effect at the time of purchase. Product specifications can change without notice.

INOGENI, Inc.
979 de Bourgogne avenue, suite 530
Québec
G1W 2L4 (QC) Canada