



## APPLICATION EXAMPLES USING INOGENI PRODUCTS

**INOGENI**  
MAKE YOUR ONLINE COMMUNICATION BETTER

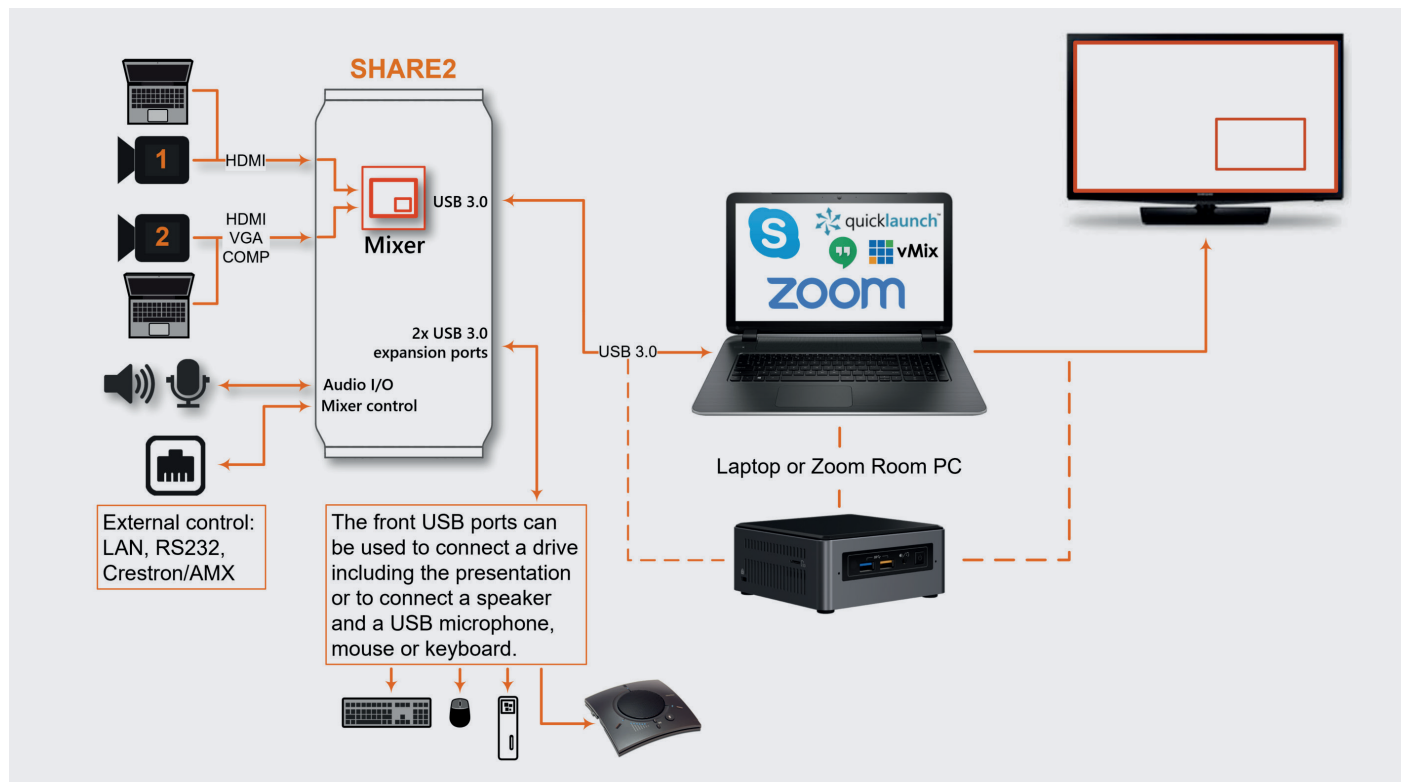


See how to improve  
easily your meetings  
and webcasts with  
INOGENI products.

## APPLICATION 1

### Meeting room with a SHARE2

Here is an example using a **SHARE2**. HDMI input # 1 can be used to connect a first camera and input # 2 to connect a second camera or a PC with the content of the presentation. The USB 3.0 expansion ports at the front of the **SHARE2** can be used to connect a USB conference speaker with a microphone or other devices. For the presenter, if you have a wireless microphone with an analog output on the receiver, you can connect it to the analog input Line-In.



The **SHARE2** features two HDMI 1080P60 inputs. Input # 2 can be used with a HDMI or VGA or DVI source, video adapters are included. HDMI inputs can be used with a camera, PC or any unencrypted source. Encrypted HDCP sources such as DVD player, set up box, Chromecast, Roku and Apple TV are not supported.

The 1/8" audio I/O analog jacks at the back can be used to connect an external speaker and a microphone. The audio input selection from the analog Line-In, HDMI is controlled by INOGENI

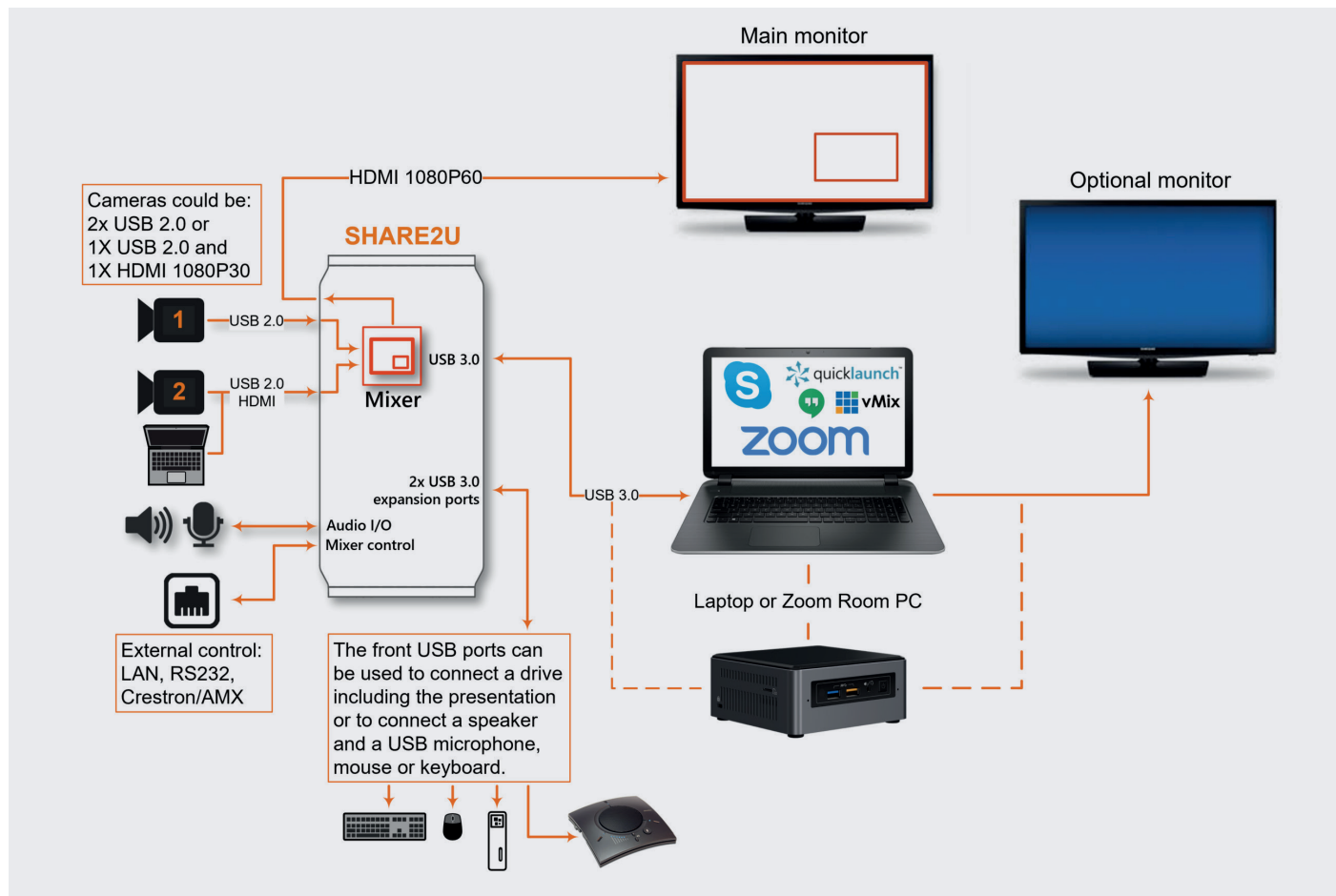
Control App software including the output gain for the analog Line-Out. You have few options for the audio in: Mix Audio (mixes audio from all inputs), Follow input (follows audio of selected input with a priority on the analog over other inputs) and Automatic audio selection (priority order is: analog, HDMI 1, HDMI 2).

To control the video input mixer selection, you can use the buttons on the top of the **SHARE2**, or it can also be controlled externally by SHARE REMOTE, LAN, RS-232 and Crestron/AMX.

## APPLICATION 2

### Meeting room with a SHARE2U

Here is an example using a **SHARE2U**. The **SHARE2U** has a HDMI output from the video mixer; this is a nice feature to see directly the video output. The USB 2.0 input # 1 can be used to connect a first camera and the input # 2 to connect a second USB 2.0 or HDMI camera or a PC on the HDMI port with the presentation content. Note that most USB 3.0 cameras are backward-compatible with USB 2.0. For the input # 2 HDMI has a priority over USB 2.0. You can change the input type by pressing button “2” on the top of the **SHARE2U**. The USB 3.0 expansion ports at the front of the **SHARE2U** can be used to connect a USB conference speaker with a microphone or other peripherals. For the presenter, if you have a wireless microphone with an analog output at the receiver you can connect it to the analog Line-In.



The **SHARE2U** features two USB 2.0 inputs, input # 2 is shared with a HDMI 1080P30/720P60 input. The HDMI input # 2 can be used with a camera, PC or any unencrypted source. Encrypted HDCP sources as DVD player, set up box, Chromecast, Roku, Apple TV are not supported.

The 1/8" audio I/O analog jacks at the back can be used to connect an external speaker and a microphone. The audio input selection from the analog Line-In, HDMI is controlled by INOGENI Control App software including the output gain for

the analog Line-Out. You have few options for the audio in: Mix Audio (mixes audio from all inputs) and Automatic audio selection (priority order is: analog, USB1, USB2). HDMI is always mixed with the audio input.

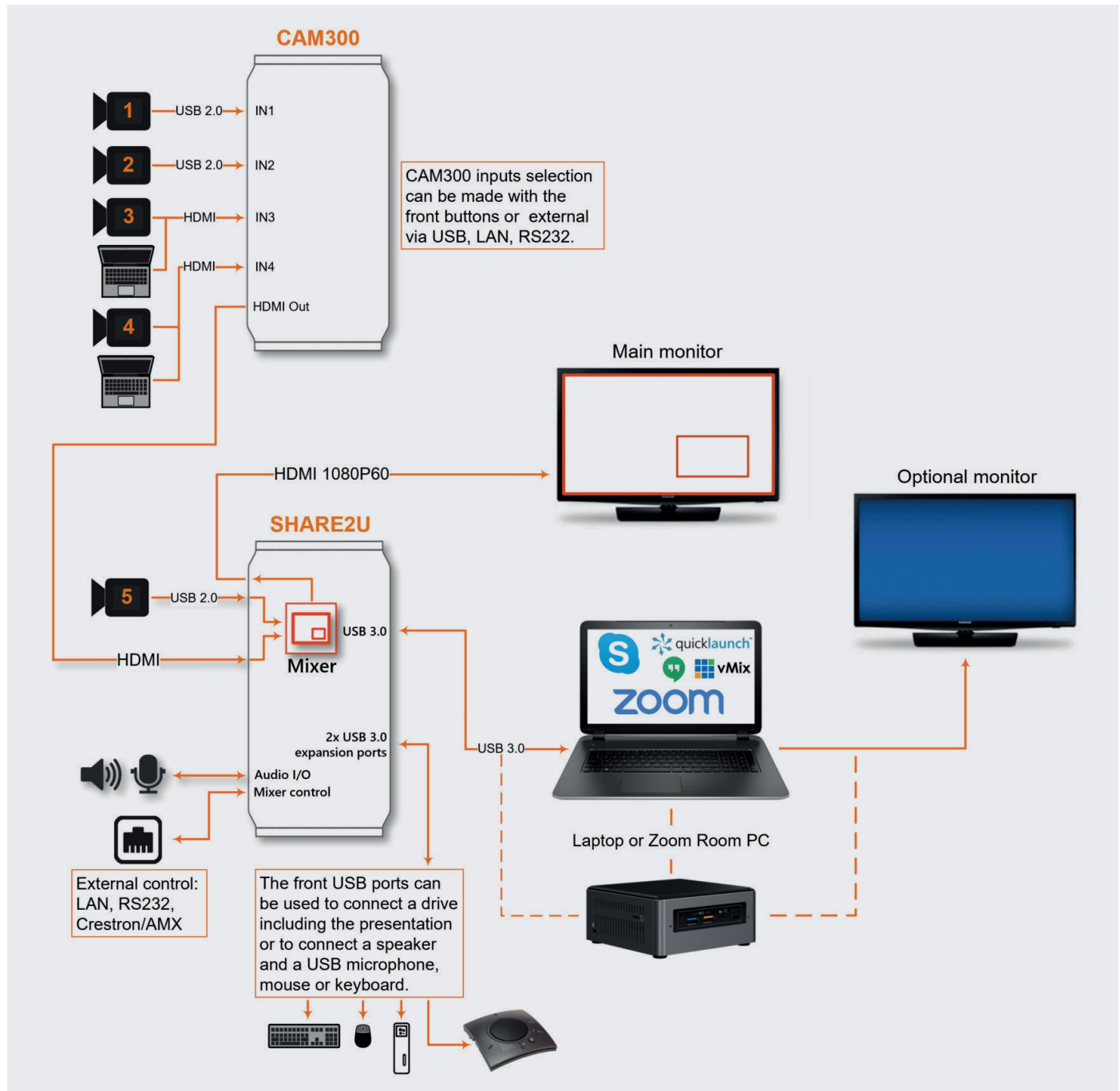
To control the video input mixer selection, you can use the buttons on the top of the **SHARE2U**, or it can also be controlled externally by SHARE REMOTE, LAN, RS-232 and Crestron/AMX.



## APPLICATION 3

### Big meeting room with a SHARE2U and a CAM300

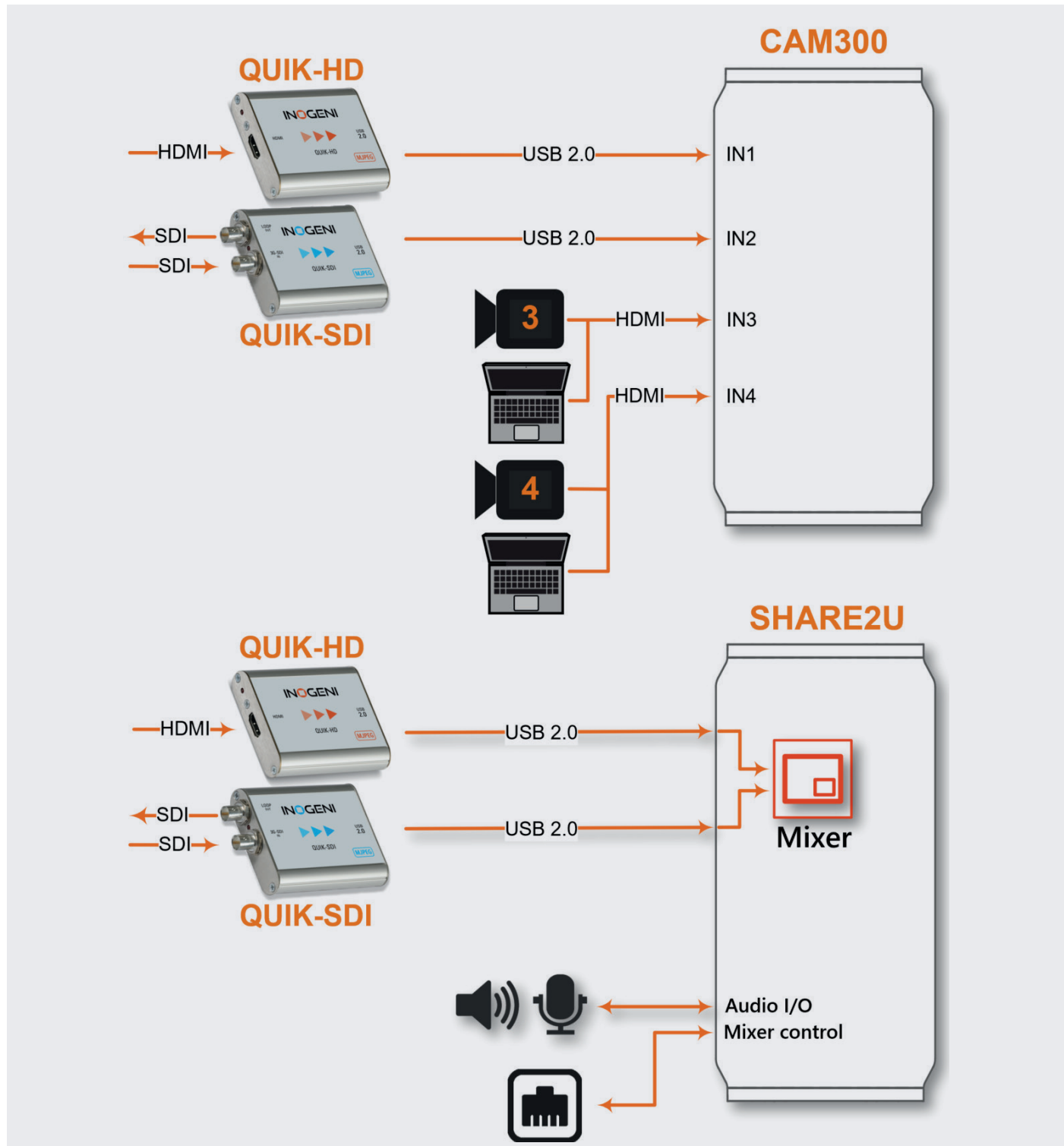
In this example, an INOGENI CAM300 video selector is combined with a SHARE2U connected to HDMI input # 2 to expand the number of camera inputs. The same setup using a CAM300 will work with a SHARE2.



## APPLICATION 4

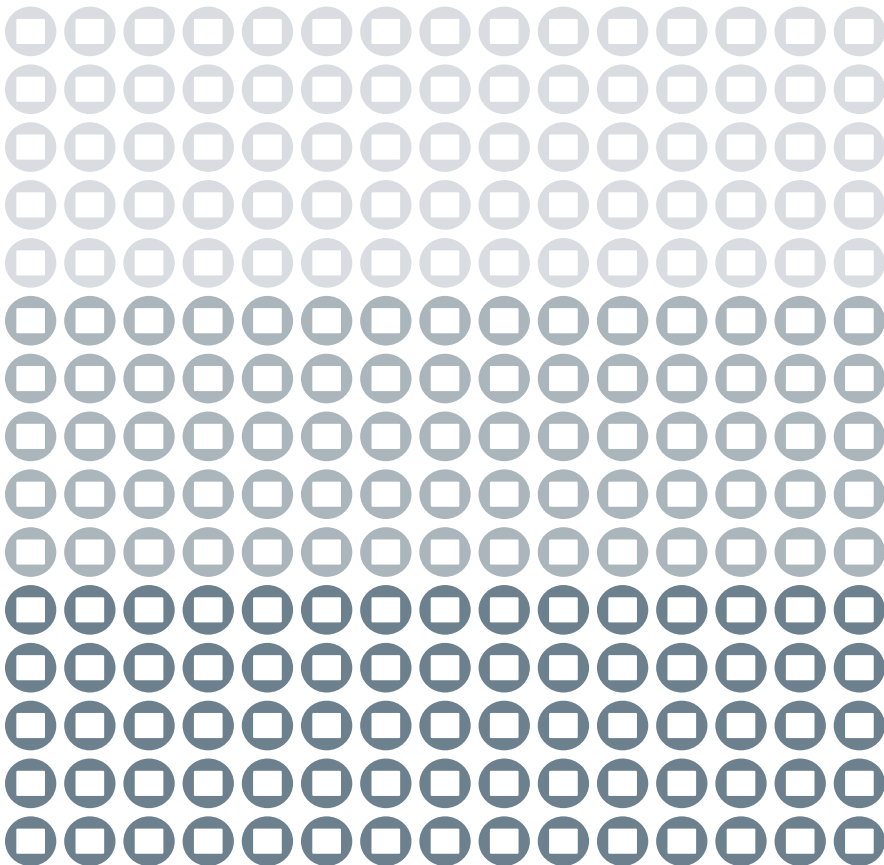
### SDI and additional HDMI input with a SHARE2U or a CAM300

In this example, an INOGENI QUIK-SDI (SDI to USB 2.0) and/or a QUIK-HD (HDMI to USB 2.0) are connected to a **SHARE2U** and a **CAM300** USB inputs. These avenues give alternatives to connect SDI cameras or additional HDMI inputs.





MAKE YOUR ONLINE COMMUNICATION BETTER



979, de Bourgogne avenue, suite 530  
Québec (Québec) Canada G1W 2L4

**418-651-3383**

**Sales:** [sales@inogeni.com](mailto:sales@inogeni.com)

**Technical Support:** [support@inogeni.com](mailto:support@inogeni.com)

**inogeni.com**