

# TOGGLE DOCK 2x1

## 2 HOST SWITCHER FOR USB/HDMI DEVICES

### DEVICE CONNECTORS



### OVERVIEW

4K BYOM: 2 HOST SWITCHER FOR USB 3.0/HDMI DEVICES

TOGGLE DOCK 2x1 is a controllable 4K60 pro-AV switcher dock station that enables seamless switching between two laptop hosts. Effortlessly switch 3 USB peripherals + 1 display between the two hosts; it is the ultimate AV dock for professional installers. No Room PC required. With USB-C 100W Power Delivery, it ensures efficient power and connectivity. Versatile control options (push button, control pad, RS-232, or API) and simplified setup make it ideal for AV installers. This solution guarantees a user-friendly, efficient meeting experience with enhanced flexibility.

**One cable to own your huddle room without a Room PC!**

- Effortless BYOM USB/HDMI devices to **2 host switcher**
  - 4K60 in 16:9 and 5Kp30 in 21:9 widescreen (HDMI)
- Flexible options for two laptops:
  - **USB-C:** USB 3.0, DisplayPort Alternate Mode with power delivery 100W
  - or USB-B 3.0 + HDMI 2.0
- **Seamless AV control and integration**
  - **TOGGLE DOCK 2x1 works standalone without a control system**, but integrates advanced capabilities via RS-232, LAN, API and GPI for automated room management.

- **Unified system control** – Integrates with Crestron, Q-SYS, Extron and AMX
- **Remote management and monitoring** – Allows IT teams to configure, troubleshoot, and update firmware without on-site interventions
- **Optimized performance and reliability** – Automates device switching, syncs with UC platforms and ensures proactive maintenance for uninterrupted meetings
- Streamline firmware updates, monitor real-time status, and configure devices effortlessly via the LAN web page or the MAESTRO software controller.—[learn more!](#)
- Perfect for huddle room pro-AV environments
  - Automatic/manual host switching (INO - BUTTON KIT available)
  - Tested and compatible by design with major camera, videobar and speakerphone manufacturers, such as Logitech, Jabra, AVer, Huddly, Bose, MAXHUB, Poly, etc.
- Made in Canada
  - Quality
  - Reliability
  - Peace of mind (no drivers required and TAA-compliant)

TOGGLE DOCK 2x1 facilitates videoconferencing management without any hassles. Users can switch all 3x USB peripherals and display between two laptops in a flash without any delays.

### WHAT'S IN THE BOX

- 1 x TOGGLE DOCK 2x1
- 1 x USB-C to USB-C cable – 1.8 m (6 ft.)
- 1 x USB 3.0 cable (USB-A to USB-B) – 1 m (3 ft.)
- 2 x 4-POS. terminal blocks
- 2 x mounting brackets
- 4 x M2.5 mounting screws for brackets on the product
- 4 x screws for TOGGLE DOCK 2x1 table/wall mount
- 1 x PSU mounting bracket
- 4 x screws for the PSU table/wall mount
- 4 x rubber feet
- 1 x power supply 85-264VAC 50/60Hz to 24V/6.67A DC/160W
  - International adapters included in the box (USA/CA or EU/UK/AU/BIS)

## HOW DOES IT WORK?

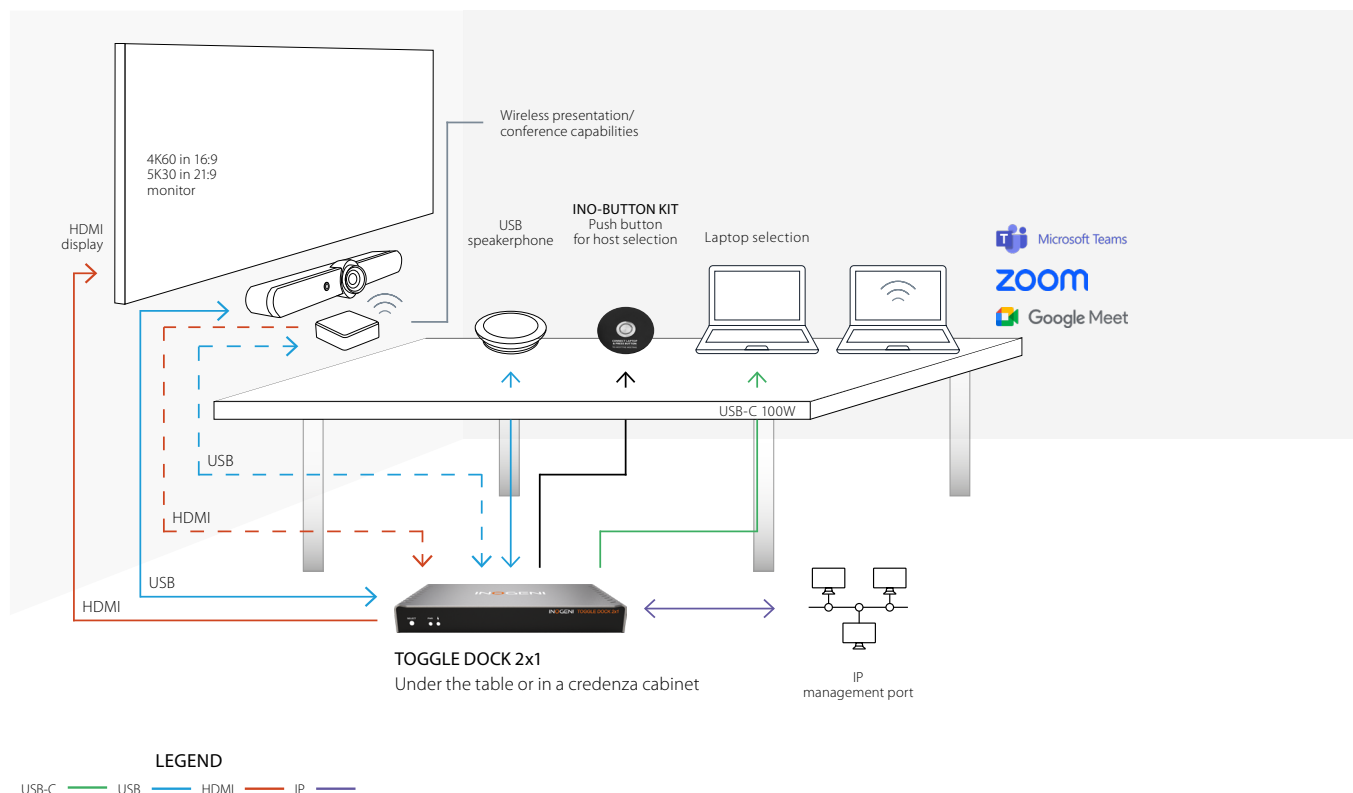
**Enable BYOM videoconferencing in huddle rooms with TOGGLE DOCK 2x1 – No Room PC required.** Run professional-grade video meetings directly from your laptop using your preferred conferencing application—Teams, Zoom, or Google Meet—with seamless AV switching powered by TOGGLE DOCK 2x1. Designed for professional UC environments, TOGGLE DOCK 2x1 effortlessly connects peripherals while providing flexible laptop charging and connectivity via USB-C, USB-B, and HDMI, ensuring compatibility with both modern and legacy devices.

This flexibility extends across various settings, from huddle rooms to large boardrooms, classrooms, and auditoriums, making it an ideal solution for unified videoconferences.

### ONE CABLE SOLUTION TO TAKE CONTROL OF THE ROOM

- 1.8 m (6 ft.) USB-C 100W cable included
- USB-C solutions tested up to 15 m (50 ft.) [View the list here.](#)
- 1x HDMI output up to 4K60 for display compatible with a 5Kp30 widescreen in 21:9

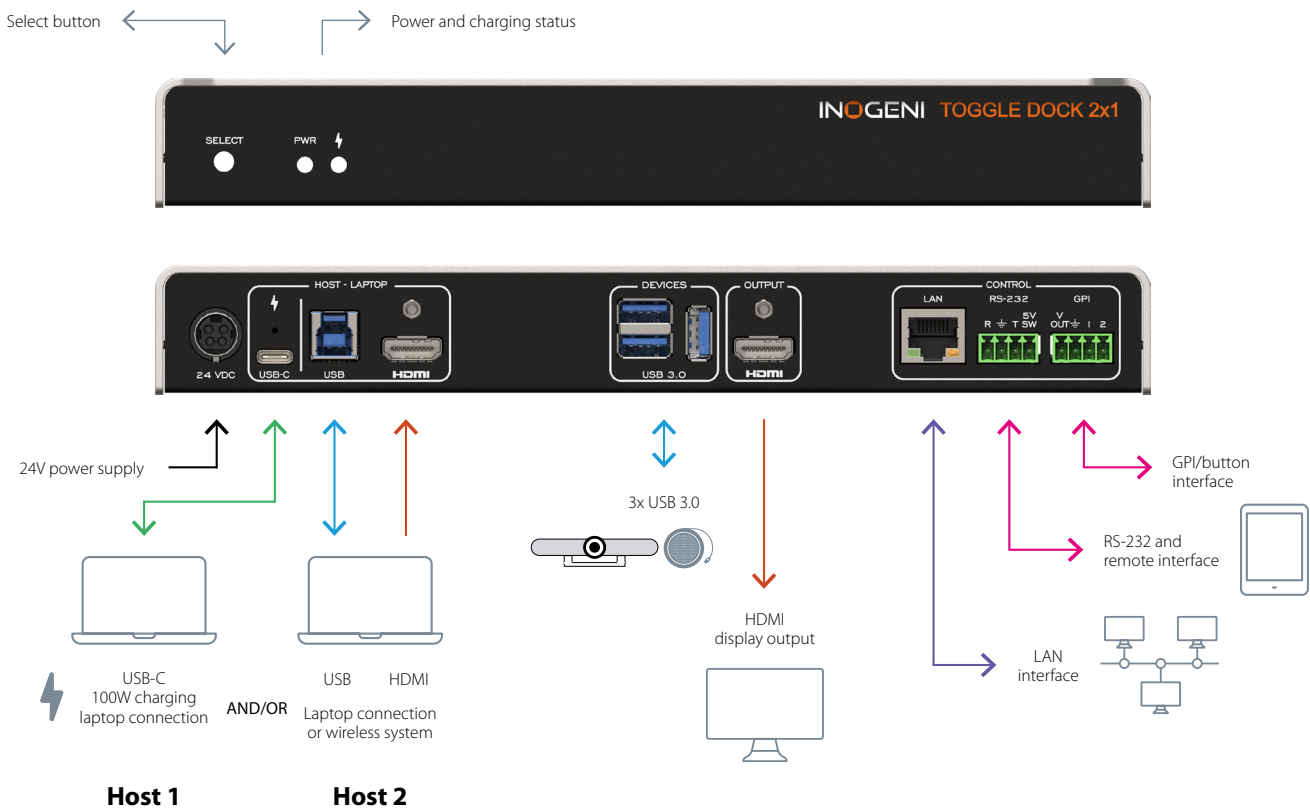
## FEATURED CONNECTORS



# TOGGLE DOCK 2x1 – 2 HOST SWITCHER FOR USB/HDMI DEVICES



## DEVICE INTERFACES



## TECHNICAL SPECIFICATIONS

Device configuration via the [INOGENI MAESTRO](#) device controller

### HOST - LAPTOP

1x USB-C connector	Supports USB-C DisplayPort Alternate Mode <ul style="list-style-type: none"><li>• DisplayPort up to 3840x2160p60/4096x2160p60</li><li>• USB 3.0 (USB 3.1 Gen 1/5 Gbps)</li><li>• USB 2.0 (480 Mbps)</li><li>• Charges up to 100W</li></ul> USB-C cable locking option
1x USB connector	USB 3.0 Type-B
1x HDMI connector	Up to 3840x2160p60/4096x2160p60 Cable locking option

### USB DEVICES

Connector	3x USB 3.0 Type-A ports
Power	1.8A shared between downstream ports

### HDMI DISPLAY OUTPUT

Resolution	Up to 3840x2160p60/4096x2160p60/Compatible with a 5Kp30 widescreen in 21:9
Connector	HDMI with cable locking option

### VIDEO - HDMI

HDCP compliance	Compliant with HDCP2.3, HDCP2.2 and HDCP1.4
HDMI compliance	Compliant with HDMI2.0b, HDMI1.4 and DV11.0
Sampling frequency	600MHz
Video scaling	Crosspoint switch supports video downscaling from 4K to 1080p
Chroma subsampling	YUV/RGB 4:4:4, 4:2:2
CEC	Ability to send CEC commands to connected HDMI display sink

## TECHNICAL SPECIFICATIONS - CONT.

AUDIO - HDMI	
Audio	Audio passthrough from input to output
Formats	LPCM, Dolby Digital and DTS up to 192kHz
CONTROL	
Control options	Front button – For laptop selection RS232 GPI LAN USB Or via INO-BUTTON KIT
IP interface	10/100Mbps Supports DHCP or static addressing IP control available through RESTAPI and Telnet connections
RS-232 interface	4-POS. terminal block connector Baud rates: 9600 [default], 19200, 38400 and 115200 Data bits: 8 Stop bits: 1 Parity: None Flow control: None
GPI interface	4-POS. terminal block connector 2x Contact-closure control GPI: - Controlled by open-drain IO (short to ground) or driven IO - Supported voltage range: 0 to 12V max - Voltage threshold is 2.3V VOUT: - Able to power up the led on the button of our INO-Button accessory - Logic-low level: 0 @ 0.5V - Logic-high level: 4.5 @ 5
COMPATIBILITY	
Operating system	No driver installation necessary! Windows 10 and above macOS 10.10 and above Linux (kernel v2.6.38) and above
Consumed USB tiers	1 tier The device adds 1 tier to the USB chain because of the embedded USB hub.

PHYSICAL DETAILS	
Dimensions (W x L x H)	25.1 cm x 11.57 cm x 3.26 cm 9.88" x 4.56" x 1.28"
Power supply	160W (85-264VAC 50/60Hz to 24V/6.67A DC)
Weight	790 g (1.74 lb)
Package content	1x TOGGLE DOCK 2x1 1x USB-C to USB-C cable – 1.8 m (6 ft.) 1x USB 3.0 cable (USB-A to USB-B) – 1 m (3 ft.) 2x 4-POS. terminal blocks 2x mounting brackets 4x M2.5 mounting screws for brackets on the product 4x screws for TOGGLE DOCK 2x1 table/wall mount 1x PSU mounting bracket 4x screws for the PSU table/wall mount 4x rubber feet 1x power supply 85-264VAC 50/60Hz to 24V/6.67A DC/160W International adapters included in the box (USA/CA or EU/UK/AU/BIS)
Operating temperature	0°C to 45°C/32°F to 113°F
Storage temperature	-40°C to 105°C/-40°F to 221°F
Relative humidity	10% to 90% non-condensing
Mounting options	Ability to mount under the table or on a wall

INFORMATION	
UPC code	051497468064
Origin	Canada
Warranty	5 years

CERTIFICATIONS	
Certifications device	FCC, CE, UKCA, RoHS, IEC62368, SoV, RCM, NOM
Certifications power supply	FCC, CE, UKCA, CB, IEC 62368, UL, TUV, Test report
TAA-compliant	Yes

For technical support, contact us at [support@inogeni.com](mailto:support@inogeni.com)

Copyright © 2025/05 INOGENI | All Rights Reserved. INOGENI name and logo are trademarks or registered trademarks of INOGENI. Use of this product is subject to the terms and conditions of the license and limited warranty in effect at the time of purchase. Product specifications can change without notice.