

TOGGLE ROOMS

3 HOST SWITCHER FOR USB/HDMI DEVICES

DEVICE CONNECTORS



- Power charging to 100W on USB-C for the laptop
- Cost-effective solution that is reliable as well as simple to install and connect (no driver required)
- Designed and manufactured in Canada
- TAA-compliant



OVERVIEW

4K BYOD/BYOM: 2PCs SWITCHER FOR USB 3.0/HDMI DEVICES

TOGGLE ROOMS connects to three USB 3.0 devices and one HDMI displays across two PC hosts, ensuring a pro-AV, unified communication system with a remarkable 4Kp60 resolution. You can seamlessly switch from a Room PC to a laptop host, ensuring a friendly and efficient meeting experience.

Switch 4 peripherals between 3 hosts:

Redefine collaboration with Bring Your Own Device (BYOD) and Bring Your Own Meeting (BYOM) support, offering the flexibility of a push button or control pad for various meeting scenarios.

AUTOMATIC/MANUAL HOST SWITCHING UP TO 4Kp60 :

- PC 1 (Laptop): USB-C (100W) or USB-B + HDMI
- PC 2 (Room PC): USB-B + HDM
- 4kp60 in 16:9 and 21:9 wide screen capable (HDMI)
- Compatible by design: Teams, Zoom, on Crestron, Logitech, Lenovo, Poly, MAXHUB CODECs, Q-SYS
- Perfectly compatible with Logitech UC cameras and CODECs
 - Logitech-tested compatible cameras: Rally and Rally Bar series, MeetUp, MeetUp 2, Scribe, and consumer cameras
 - Logitech UC CODECs: Rally Bar and Rally Bar series (Appliance Mode), Roommate, for MTR and Zoom Rooms
- Controllable by RS-232, IP or 2x GPI (PC selection: BYOD/ BYOM) or a table surface-mounted button for BYOM laptop selection

WHAT'S IN THE BOX

- 1 x TOGGLE ROOMS
- 1 x USB-C to USB-C cable – 1.8 m/6 ft.
- 1 x USB 3.0 cable (USB-A to USB-B) – 1 m/3 ft.
- 2 x terminal block 4-POS
- 2 x mounting brackets
- 4 x M2.5 mounting screws for brackets on product
- 4 x screws for Toggle Rooms table/wall mount
- 1 x power supply: 85-264VAC 50/60Hz to 24V/6.67A DC/160W
 - International adapters included in the box (USA/CA or EU/UK/AU/BIS)
- 1 x PSU mounting bracket
- 4 x screws for PSU table/wall mount
- 4 x rubber feet

HOW DOES IT WORK?

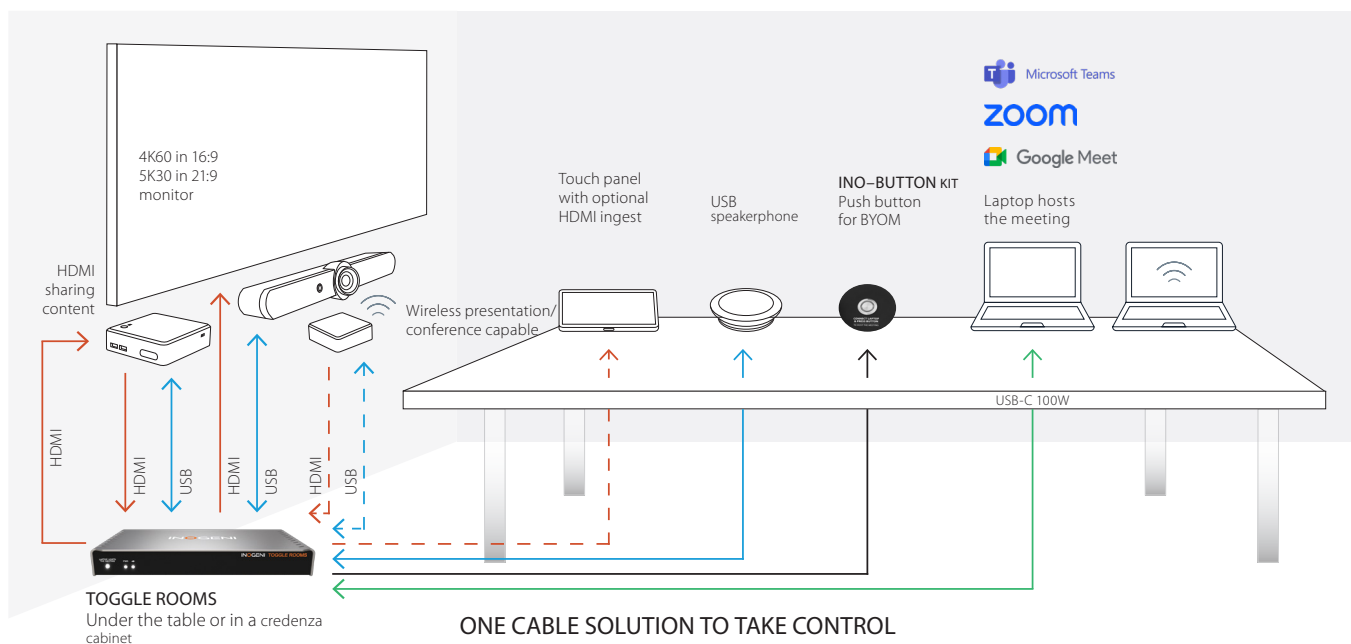
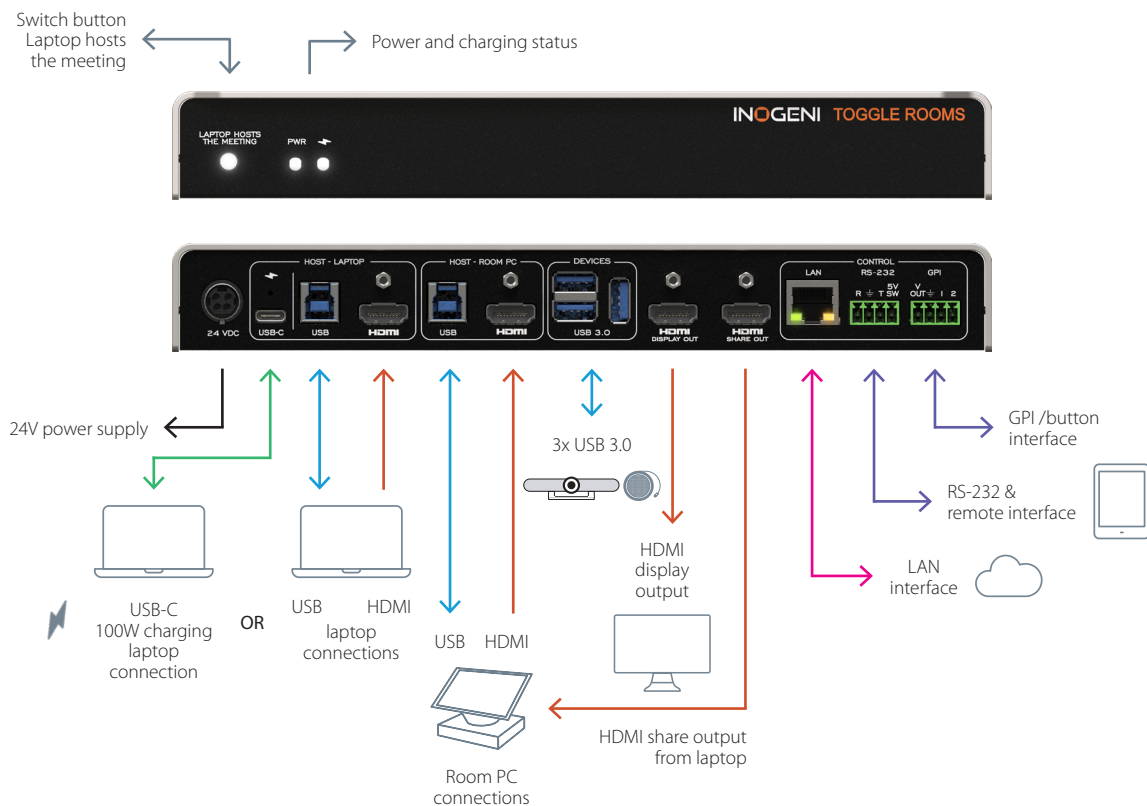
TOGGLE ROOMS seamlessly integrates into a Room PC environment, allowing users to connect peripherals and charge their laptops via versatile options, such as USB-C or USB-B and HDMI for older laptop models.

This flexibility extends across various settings, from huddle rooms to large boardrooms, classrooms, and auditoriums, making it an ideal solution for unified videoconferences.

TOGGLE ROOMS – 3 HOST SWITCHER FOR USB/HDMI DEVICES



DEVICE CONNECTORS



ONE CABLE SOLUTION TO TAKE CONTROL OF THE ROOM

- 2-meter USB-C 100W cable included
- USB-C solutions tested up to 10 meters
- 1 or 2 monitors up to 4Kp60 or 21:9 wide screen capable

LEGEND

USB-C — USB — HDMI —

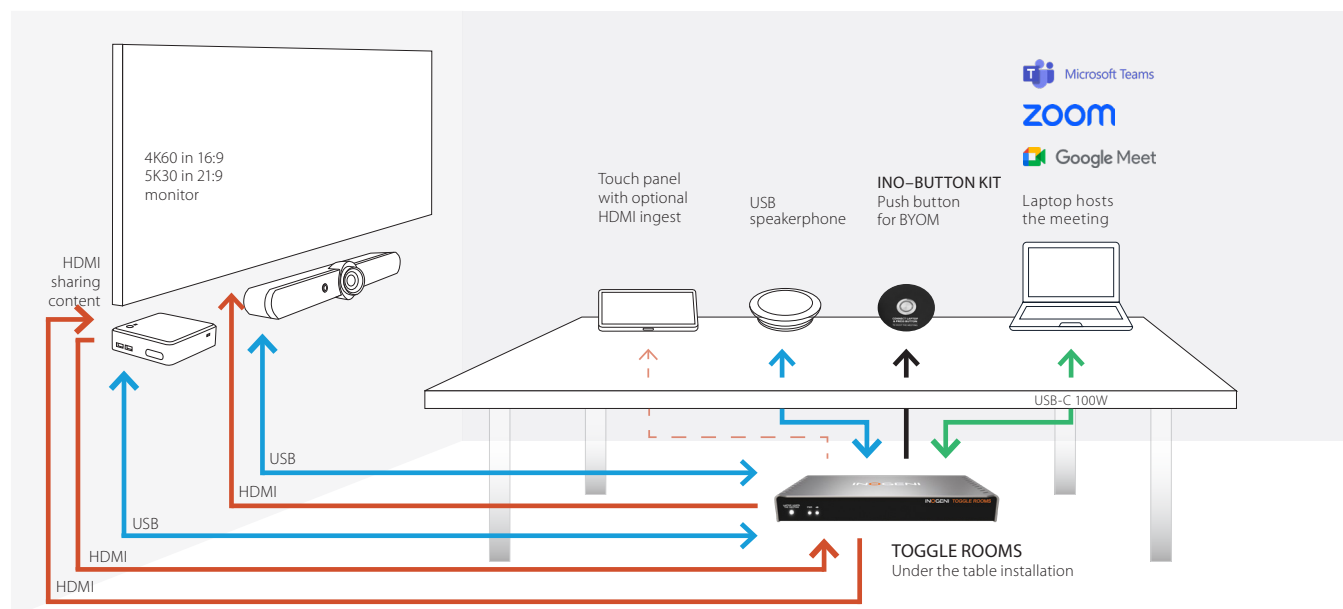


DEVICE INTERFACES

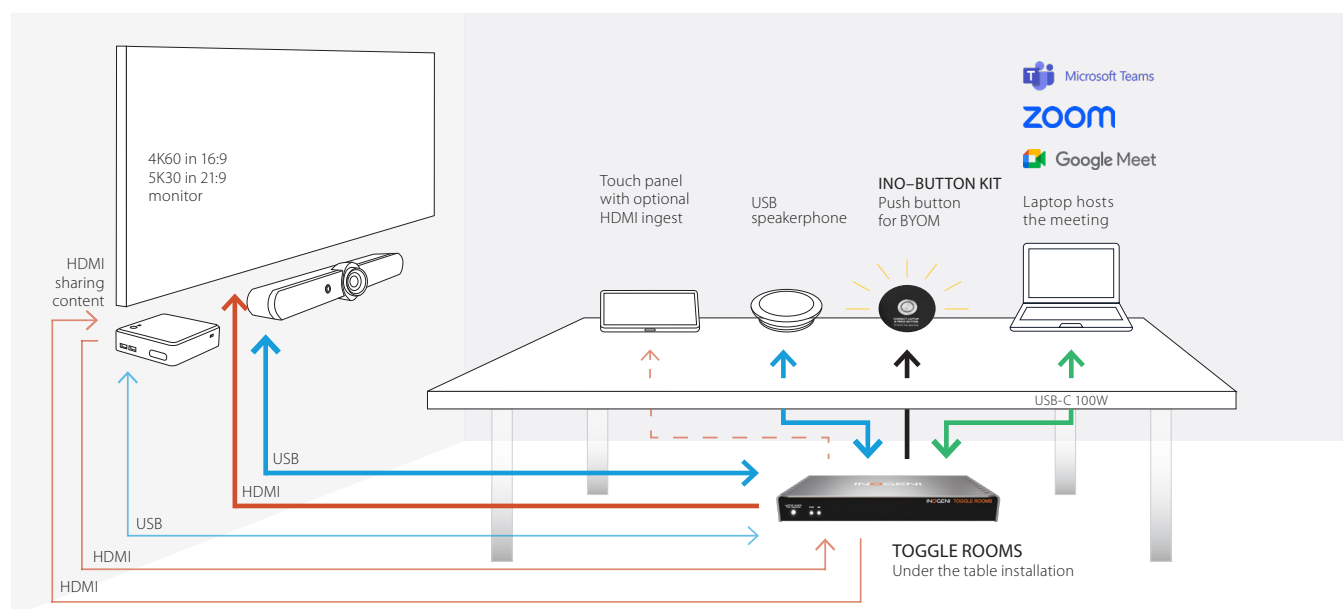
3 application scenarios

SWITCH BYOD/BYOM with only one USB-C (100W) cable for a Room PC and laptop

ROOM PC with content sharing



BYOM



TECHNICAL SPECIFICATIONS

Device configuration via the [INOGENI MAESTRO](#) device controller

HOST - LAPTOP

1x USB-C connector	Supports USB-C DisplayPort Alternate Mode <ul style="list-style-type: none"> • DisplayPort up to 3840x2160p60 / 4096x2160p60 • USB 3.0 (USB 3.1 Gen 1/5 Gbps) • USB 2.0 (480 Mbps) • Charges up to 100W • USB-C cable locking option
1x USB connector	Up to 3840x2160p60 /
1x HDMI connector	4096x2160p60 Cable locking option

HOST - ROOM PC

1x USB connector	USB 3.0 Type-B
1x HDMI connector	Up to 3840x2160p60 / 4096x2160p60 Cable locking option

HDMI DISPLAY OUTPUT

Resolution	Up to 3840x2160p60 / 4096x2160p60 / Compatible with a 5Kp30 widescreen in 21:9
Connector	HDMI with cable locking option

HDMI SHARE OUTPUT

Resolution	Up to 3840x2160p60 / 4096x2160p60 / Compatible with a 5Kp30 widescreen in 21:9
Connector	HDMI with cable locking option

USB DEVICES

Connector	3x USB 3.0 Type-A ports
Power	1.8A shared between downstream ports

AUDIO - HDMI

Audio	Audio passthrough from input to output
Formats	LPCM, Dolby Digital and DTS, up to 192kHz

VIDEO - HDMI

HDCP compliance	Compliant with HDCP2.3, HDCP2.2 and HDCP1.4
HDMI compliance	Compliant with HDMI2.0b, HDMI1.4 and DVI1.0
Sampling frequency	600MHz
Video scaling	Crosspoint switch supports video downscaling from 4K to 1080p
Chroma subsampling	YUV/RGB 4:4:4, 4:2:2
CEC	Ability to send CEC commands to connected HDMI display sink

CONTROL

Control options	Front button – For laptop selection RS232 GPI LAN USB
IP interface	10/100Mbps Supports DHCP or static addressing IP control available through RESTAPI and Telnet connections
RS-232 interface	4-pos terminal block connector Baud rates: 9600 [default], 19200, 38400 and 115200 Data bits: 8 Stop bits: 1 Parity: None
GPI interface	4-POS terminal block connector 2x Contact-closure control GPI: Controlled by open-drain IO (short to ground) or driven IO Supported voltage range: 0 to 12V max Voltage threshold is 2.3V VOUT: Option to power up our custom LED button Logic-low level: 0 @ 0.5V Logic-high level: 4.5 @ 5V

TECHNICAL SPECIFICATIONS - CONT.

COMPATIBILITY	
Operating system	NO driver installation necessary! Windows 7 and above (32/64-bit) macOS 10.10 and above Linux (kernel v2.6.38 and above)
Compatible videoconferencing systems	<ul style="list-style-type: none"> • Crestron - Flex Series • Crestron - Flex Advanced Series • Poly - Studio Room Kit with HP Mini Conferencing PC • MAXHUB - MAXHUB XCore Kit • Logitech - Tap with Rally • Logitech - Tap with MeetUp • Logitech - Rally Bar Tap room systems • Lenovo - ThinkSmart Hub Gen 2 Microsoft Teams Rooms • Lenovo - ThinkSmart Core + Controller • Lenovo - ThinkSmart Core & IP Controller Kit • Jabra - PanaCast 50 Room System • Airtame - Airtame Hub
Consumed USB tiers	1 tier The device adds 1 tier to the USB chain because of the embedded USB hub.
UC Logitech cameras and CODECs compatibility	Logitech-tested compatible cameras: Rally and Rally Bar series, MeetUp, MeetUp 2, Scribe, and consumer cameras Logitech UC CODECs: Rally Bar and Rally Bar series (Appliance Mode), Roommate, for MTR and Zoom Rooms

INFORMATION	
UPC code – US & CAN	051497418694
UPC code – International market EU/UK/AU/BIS/	051497418700
Origin	Canada
Warranty	5 years: Products purchased by the end-user after August 1, 2024 2 years: Products purchased by the end-user before to August 1, 2024

PHYSICAL DETAILS	
Dimensions (W x L x H)	25.1 cm x 11.57 cm x 3.26 cm 9.88" x 4.56" x 1.28"
Power supply	160W (85-264VAC 50/60Hz to 24V/6.67A DC)
Weight	790 g (1.74 lb)
Package content	1x TOGGLE ROOMS 1x USB-C to USB-C cable – 1.8 m/6 ft. 1x USB 3.0 cable (USB-A to USB-B) – 1 m/3 ft. 2x terminal block 4-POS 2x mounting brackets 4x M2.5 mounting screws for brackets on product 4x screws for Toggle Rooms table/wall mount 1x power supply: 85-264VAC 50/60Hz to 24V/6.67A DC/160W International adapters included in the box (USA/CA or EU/UK/AU/BIS) 1x PSU mounting bracket 4x screws for PSU table/wall mount 4x rubber feet 0°C to 45°C / 32°F to 113°F
Operating temperature	-40°C to 105°C / -40°F to 221°F
Storage temperature	0% to 90% non-condensing
Relative humidity	Ability to mount under the table
Mounting options	or on a wall

CERTIFICATIONS	
Certifications device	FCC, CE, UKCA, RoHS, IEC62368, SoV, RCM, NOM
Certifications power supply	FCC, CE, UKCA, CB, CB IEC 62368, UL, TUV, Test report
TAA-compliant	Yes

For technical support, contact us at support@inogeni.com

Copyright © 2025/03 INOGENI | All Rights Reserved. INOGENI name and logo are trademarks or registered trademarks of INOGENI. Use of this product is subject to the terms and conditions of the license and limited warranty in effect at the time of purchase. Product specifications can change without notice.

inogeni.com

This sales sheet is constantly being updated. Please make sure that you have the latest version by regularly visiting inogeni.com

TECHNICAL SPECIFICATIONS - CONT.

PHYSICAL DETAILS
- CONT.

Operating temperature	0°C to 45°C / 32°F to 113°F
Storage temperature	-40°C to 105°C / -40°F to 221°F
Relative humidity	0% to 90% non-condensing
Mounting options	Ability to mount under the table or on a wall