

TOGGLE ROOMS XT

3 host switcher for USB/HDMI devices with an extension

INOGENI

NEW

OWN THE ROOM! ANY ROOM!
BYOD/BYOM SWITCHER



MTR & ZOOM ROOMS LAPTOP SWITCHER FOR LARGE ROOMS

The hassles of long distances between Room PCs and laptop hubs are finally over. Thanks to TOGGLE ROOMS XT, switch 5 peripherals between 3 hosts with an extension. Redefine collaboration with Bring Your Own Device (BYOD) and Bring Your Own Meeting (BYOM) support. Experience flexibility for various meeting scenarios in larger spaces via the extension capabilities of our switcher and a push button or control pad.

OWN ANY ROOM WITH ONE USB-C CABLE (100W)

Versatile technology (BYOD/BYOM)

- Switch 5 peripherals between 3 hosts
- Automatic or manual switching between a Room PC hub and laptop hub
- Direct connection of 5x USB devices + 1 HDMI display



Flexibility

- Flexible laptop connectivity: USB-C (100W) or USB-B + HDMI
- 2-box system: At the display (Room PC hub) and at the table (Laptop hub)
- Uncompressed video via CAT6A cable up to 70 m/230 ft
- 1 display: 4K60/16:9 and 5K30/21:9 widescreen (HDMI)
- Compatible by design: Crestron, Logitech, Lenovo, Poly, MAXHUB, Jabra, Airtame, Teams, Zoom, etc.
- USB 3.2 Gen 1/USB 3.1 Gen 1, backward compatible with USB 3.0/2.0
- IP, RS-232 and GPI control
- Optional mountable host switch button

Peace of mind

- Designed and manufactured in Canada and TAA-compliant
- Quality and reliability
- No driver required
- New Maestro device controller for easy configuration and updates

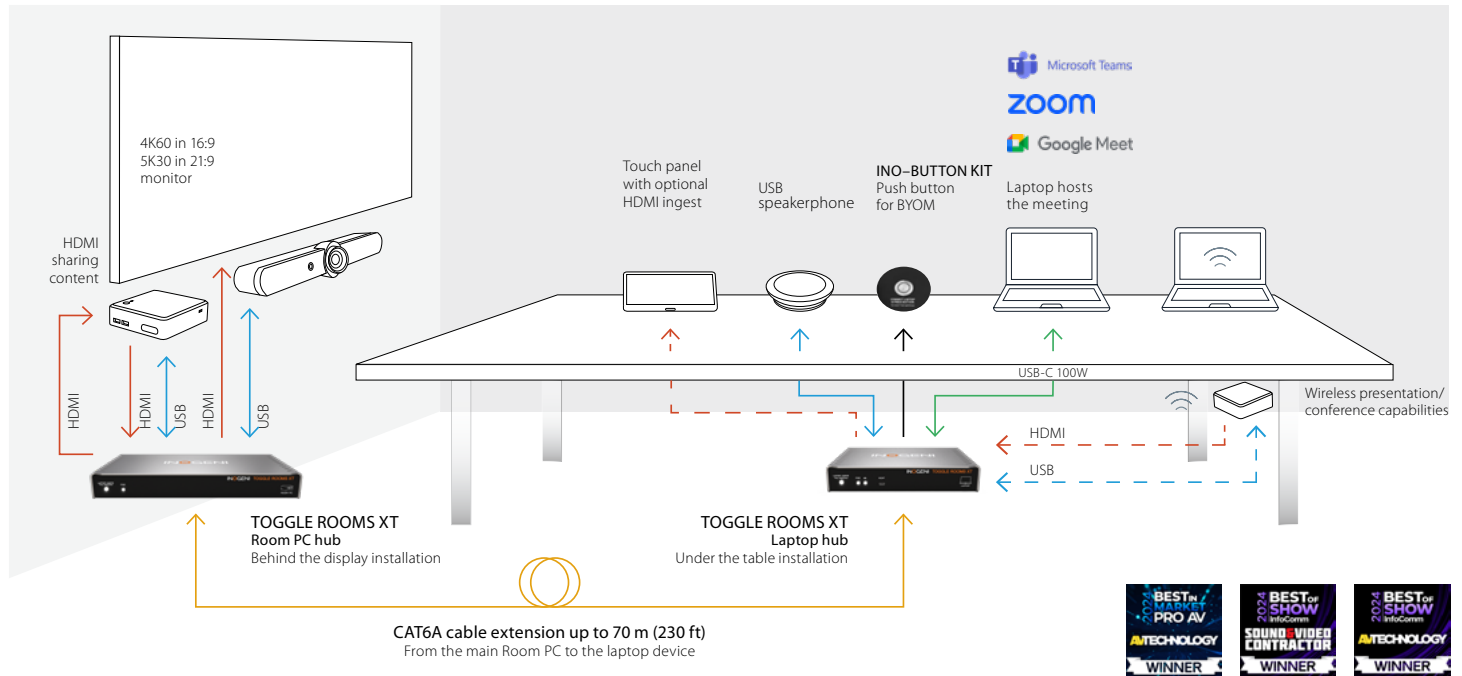
TOGGLE ROOMS XT

3 host switcher for USB/HDMI devices with an extension

ONE CABLE SOLUTION TO TAKE CONTROL OF A LARGE ROOM

Thanks to TOGGLE ROOMS XT, switch up to 5 peripherals between 3 hosts (5 USB + 1 display). This flexibility extends across various settings, from large boardrooms to classrooms and auditoriums, making it an ideal solution for seamless videoconferences.

- 1.8 m USB-C 100W cable included
- 10 m USB-C tested solutions
- 2x HDMI outputs: one for room display and one for content sharing
- 4K60/16:9 and 5K30/21:9 widescreen capabilities



2 BOX SYSTEM CONNECTORS: AT THE DISPLAY (ROOM PC HUB) AND AT THE TABLE (LAPTOP HUB)

Laptop hub

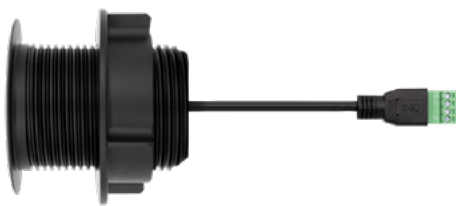
Connect up to 2 USB2 devices
Connect the laptop via USB-C (100W) or HDMI and USB-B. INO-HOST BUTTON via GPI. Routes Laptop content to control pads such as MAXHUB XCore and the Logitech Tap

CAT6A extension cable

Reach up to 70 m/230 ft from the main Room PC with a CAT6A cable
Video signal up to 40 m/131 ft for 4K60 and up to 70 m/230 ft for 4K30

Room PC hub

Connect up to 3 USB3 devices and an HDMI display
Connect to the UC system (such as Lenovo, Logitech, MAXHUB Room PC)
4K60/16:9 and 5K30/21:9 wide screen (HDMI)



Optional easy host switch button: Table surface-mounted button for BYOM laptop selection

- Anodized metal button with LED ring and terminal block hardware
- Illuminated indicator when BYOM mode is activated
- Cameras, audio, videobar and display are connected to the laptop for a BYOM meeting

inogeni.com

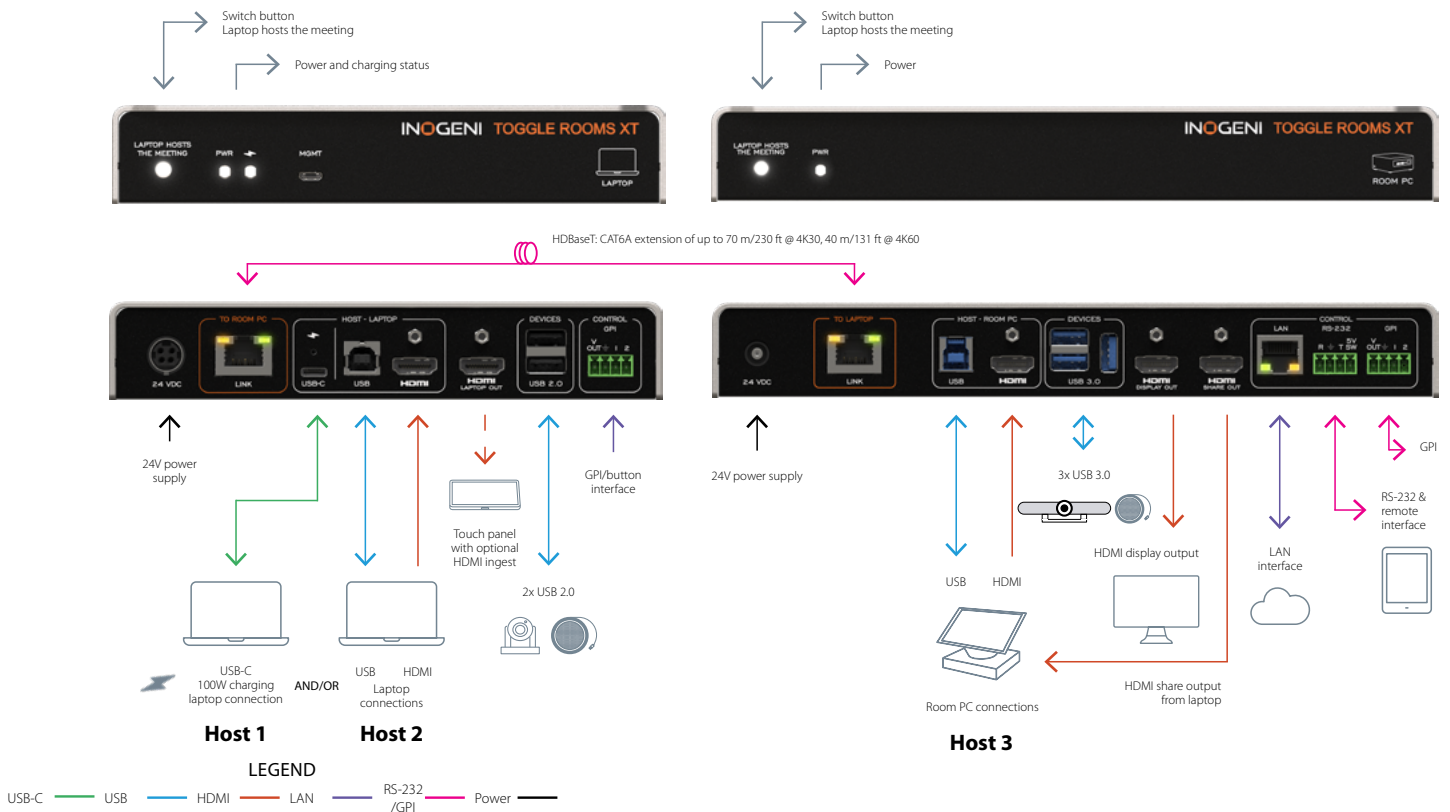
TOGGLE ROOMS XT

3 host switcher for USB/HDMI devices with an extension

OPTIMIZED DESIGN FOR LARGE ROOMS WITH TOGGLE ROOMS XT

Long distance resolved between the Room PC and laptop hubs

INOGENI TOGGLE ROOMS XT CONNECTORS



Plug and play without any drivers

Fully compatible with popular videoconferencing systems, such as Microsoft Teams, Zoom Rooms, all USB cameras and videobars. It also works perfectly with professional-caliber equipment, such as Huddle, HuddleCamHD, AVer, Jabra, Logitech, Marshall cameras and web cameras.

