

# TOGGLE ROOMS XT

## 3 HOST SWITCHER FOR USB/HDMI DEVICES WITH AN EXTENSION

### DEVICE CONNECTORS

Room PC hub



Laptop hub



### OVERVIEW

One USB-C cable (100W) to take control of your large room

### 4K BYOD/BYOM FOR LARGE ROOMS: 3 HOST SWITCHER FOR USB/HDMI DEVICES WITH AN EXTENSION

Switch 5 peripherals between 3 hosts:

- Automatic or manual switching between Room PC hub and Laptop hub (3 hosts capable)
- Direct connection of 5x USB devices + 1 HDMI display
- Flexible laptop connectivity: USB-C (100W) or USB-B + HDMI
- 2 box system: At the display (Room PC hub) and at the table (Laptop hub)
  - Connected with a single CAT6A cable
  - Uncompressed video signal via HDBaseT proven technology
  - Reach: 40 m/132 ft. at 4K60 and 70 m/230 ft. at 1080p
- 1 display: 4K60/16:9 and 5K30/21:9 widescreen (HDMI)
- Compatible by design: Crestron, Logitech, Lenovo, Poly, MAXHUB, Jabra, Teams, Zoom, etc.
- Perfectly compatible with Logitech UC cameras and CODECs
  - Logitech-tested compatible cameras: Rally and Rally Bar series, MeetUp, MeetUp 2, Scribe, and consumer cameras
  - Logitech UC CODECs: Rally Bar and Rally Bar series (Appliance Mode), Roommate, for MTR and Zoom Rooms
- USB 3.2 Gen 1/USB 3.1 Gen 1, backward-compatible with USB 3.0/2.0

- IP, RS-232 and GPI control
- Optional host switch button: Table surface-mounted button for BYOM laptop selection
- Designed and manufactured in Canada
- TAA-compliant

### WHAT'S IN THE BOX

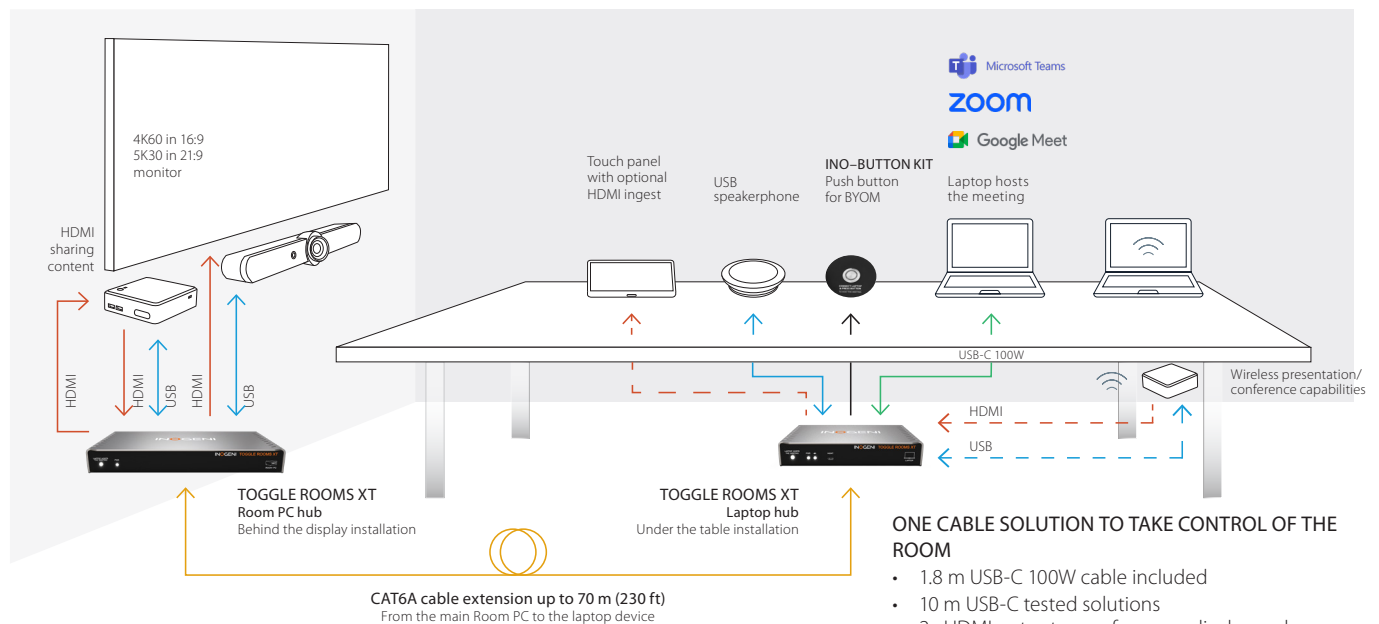
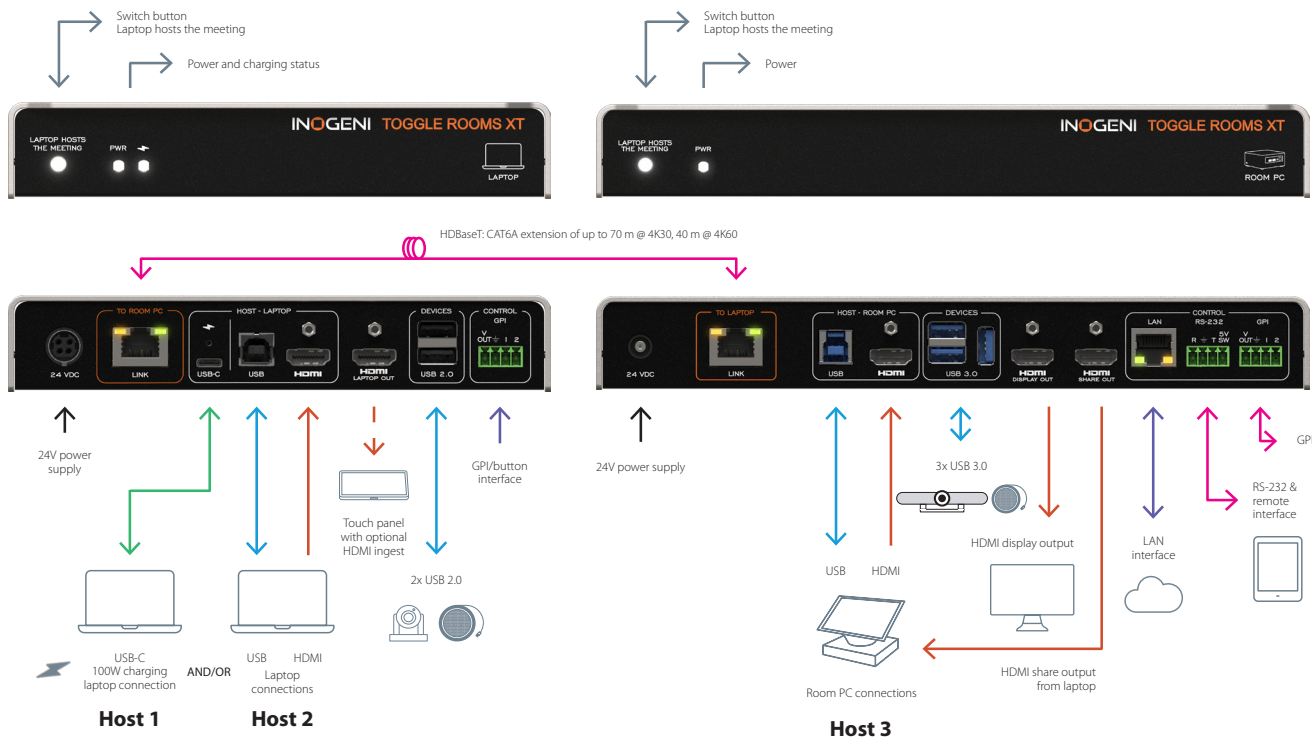
- 1x TOGGLE ROOMS XT – ROOM PC device
- 1x TOGGLE ROOMS XT – LAPTOP device
- 1x USB-C to USB-C cable – 1.8 m/6 ft.
- 1x USB 3.0 cable (USB-A to USB-B) – 1 m/3 ft.
- 3x terminal block 4-pos
- 4x mounting brackets
- 8x M2.5 mounting screws for brackets on product
- 8x screws for TOGGLE ROOMS XT devices for table/wall mount
- 1x power supply 85-264VAC 50/60Hz to 24V/6.67A DC for a LAPTOP hub
- 1x power supply 85-264VAC 50/60Hz to 24V/1.5A DC for a ROOM PC hub
- 2x international adapters included in the box (USA/CA or EU/UK/AU/BIS)
- 1x Quick Start Guide/Thank You card
- 4x PSU mounting bracket
- 8x screws for PSU table/wall mount
- 8x rubber feet

## HOW DOES IT WORK?

Switch up to 5 peripherals between 3 hosts (5 USB + 1 display):

This flexibility extends across various settings, from huddle rooms to large boardrooms, classrooms, and auditoriums, making it an ideal solution for unified videoconferences.

## FEATURED CONNECTORS

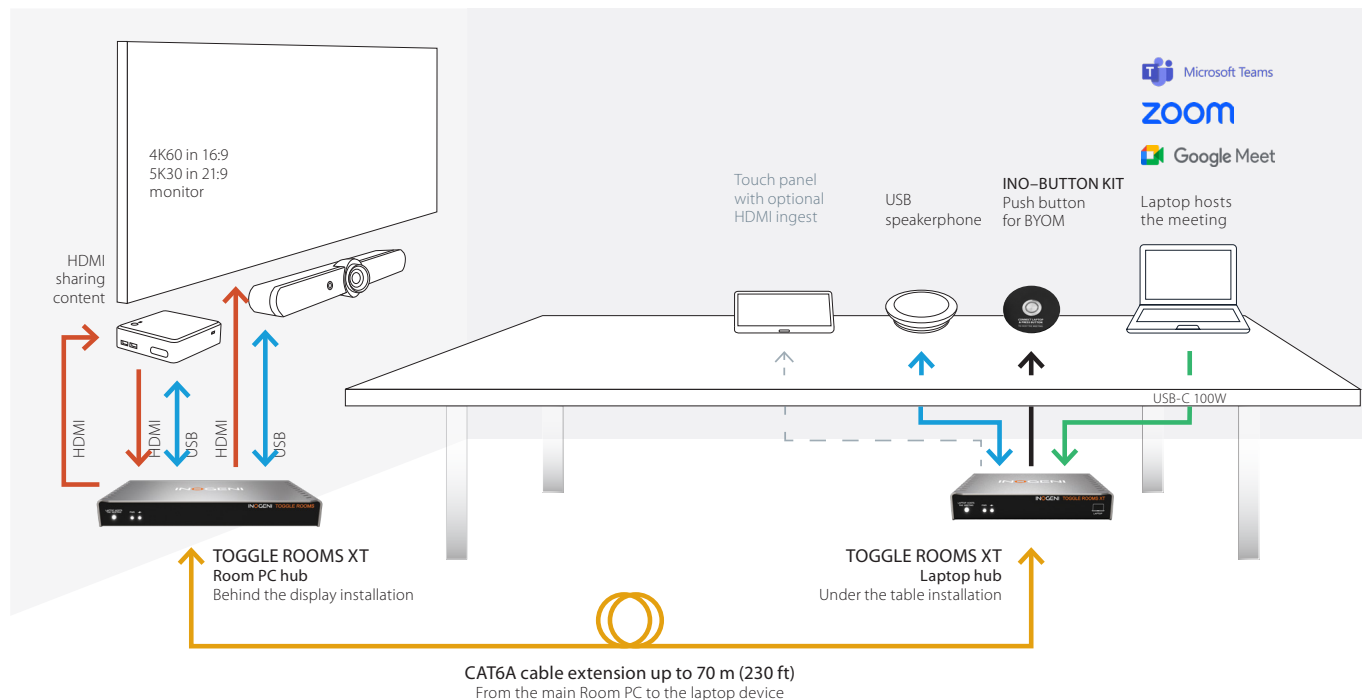


## DEVICE INTERFACES

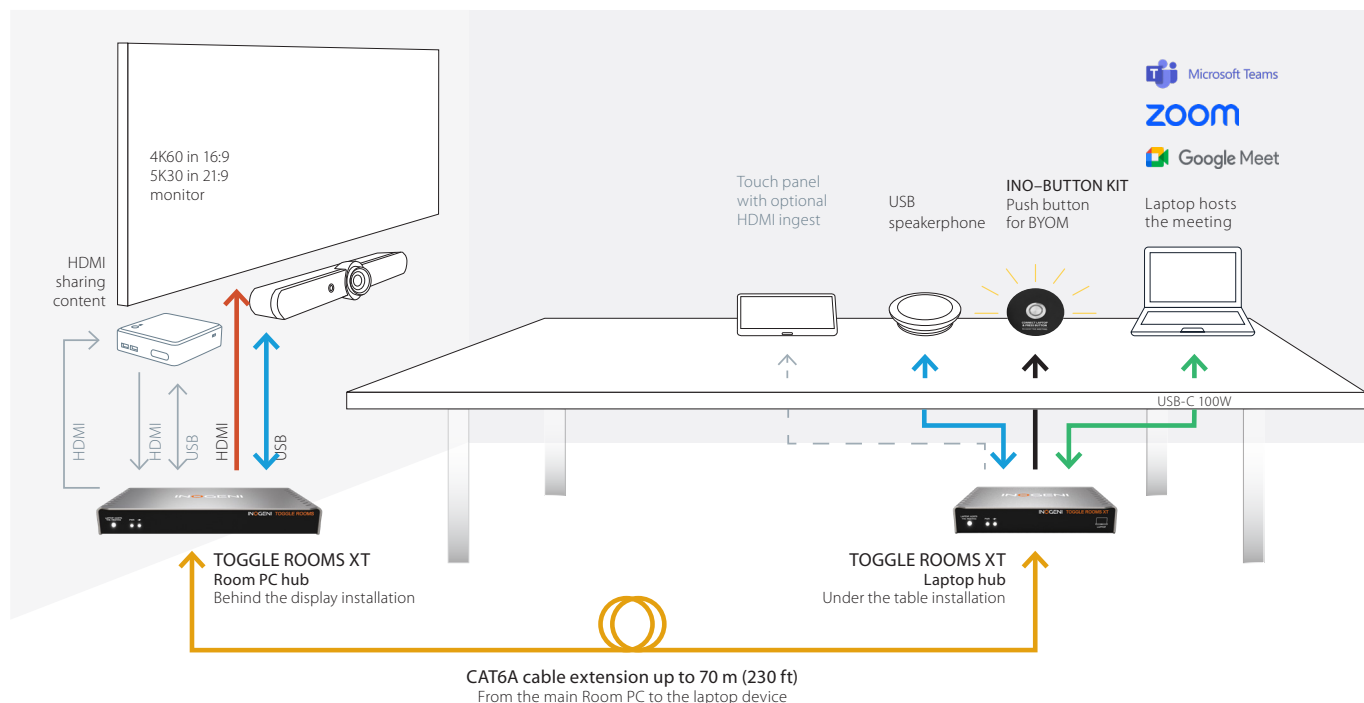
## 3 application scenarios

SWITCH BYOD/BYOM with only one USB-C (100W) cable for a Room PC and laptop

## ROOM PC with content sharing



## BYOM



## TECHNICAL SPECIFICATIONS

Device configuration via the [INOGENI MAESTRO](#) device controller

LINK	
Technology	HDBaseT 3.0
Range	Up to 40 m (132 ft) when using 4Kp60 Up to 70 m (230 ft) when using 1080p60
Medium	CAT6A U/FTP <b>NOTE:</b> We do not recommend using a crimp tool for attaching terminations. Instead, we highly recommend utilizing toolless terminations to ensure the preservation of signal integrity.

LAPTOP HUB	
USB-C connector (host #1)	Supports USB-C DisplayPort Alternate Mode <ul style="list-style-type: none"> <li>• DisplayPort up to 3840x2160p60 / 4096x2160p60</li> <li>• USB 2.0 (480 Mbps)</li> <li>• Charges up to 100W</li> <li>• USB-C cable locking option</li> </ul>
USB connector (host #2)	USB 2.0 Type-B
HDMI input connector (host #2)	Up to 3840x2160p60 / 4096x2160p60 Cable locking option
HDMI output connector	Up to 3840x2160p60 / 4096x2160p60 Cable locking option
USB devices connectors	USB 2.0 Type-A ports for peripherals
LINK connector	HDBaseT 3.0 interface
GPI	4-POS terminal block connector 2x Contact-closure control GPI: Controlled by open-drain IO (short to ground) or driven IO Supported voltage range: 0 to 12V max Voltage threshold is 2.3V VOUT: Able to power up the LED on the button of our INO-Button accessory Logic-low level: 0 @ 0.5V Logic-high level: 4.5 @ 5V
Power connector	24 VDC/160W

ROOM PC HUB	
LINK connector	HDBaseT 3.0 interface
USB connector (host #3)	USB 3.0 Type-B/5 Gbps
HDMI input connector (host #3)	Up to 3840x2160p60 / 4096x2160p60 Cable locking option
HDMI display output	Up to 3840x2160p60 / 4096x2160p60 HDMI with cable locking option
HDMI share output	Up to 3840x2160p60 / 4096x2160p60 HDMI with cable locking option
USB devices	3x USB 3.0 Type-A ports 1.8A shared between downstream ports
GPI	4-POS terminal block connector 2x Contact-closure control GPI: Controlled by open-drain IO (short to ground) or driven IO Supported voltage range: 0 to 12V max Voltage threshold is 2.3V VOUT: Able to power up the LED on the button of our INO-Button accessory Logic-low level: 0 @ 0.5V Logic-high level: 4.5 @ 5V
IP interface	10/100Mbps Supports DHCP or static addressing IP control available through RESTAPI and Telnet connections
RS-232 interface	4-pos terminal block connector Baud rates: 9600 [default], 19200, 38400 and 115200 Data bits: 8 Stop bits: 1 Parity: None Flow control: None
Power connector	24 VDC/36W

AUDIO - HDMI	
Audio	Audio passthrough from input to output
Formats	LPCM, Dolby Digital and DTS up to 192kHz

## TECHNICAL SPECIFICATIONS - CONT.

VIDEO - HDMI	
HDCP compliance	Compliant with HDCP2.3, HDCP2.2 and HDCP1.4
HDMI compliance	Compliant with HDMI2.0b, HDMI1.4 and DVI1.0
Sampling frequency	600 MHz
Video scaling	Crosspoint switch supports video downscaling from 4K to 1080p
Chroma subsampling	YUV/RGB 4:4:4, 4:2:2
CEC	Ability to send CEC commands to connected HDMI display sink

CONTROL	
Control options	Front button – For laptop selection RS232 GPI LAN USB

COMPATIBILITY	
Operating system	NO driver installation necessary! Windows 7 and above (32/64-bit) macOS 10.10 and above Linux (kernel v2.6.38 and above)
Consumed USB tiers	1 tier USB devices connected are reported to the same USB tier.
UC Logitech cameras and CODECs compatibility	Logitech-tested compatible cameras: Rally and Rally Bar series, MeetUp, MeetUp 2, Scribe, and consumer cameras Logitech UC CODECs: Rally Bar and Rally Bar series (Appliance Mode), Roommate, for MTR and Zoom Rooms

PHYSICAL DETAILS	
Room PC hub - Dimensions (W x L x H)	25.1 cm x 11.57 cm x 3.26 cm 9.88" x 4.56" x 1.28"
Room PC hub - Power supply	36W (85-264VAC 50/60Hz to 24V/1.5A DC)
Room PC hub - Weight	760 g (1.68 lb)
Laptop hub - Dimensions (W x L x H)	18.4 cm x 11.57 cm x 3.26 cm 7.24" x 4.56" x 1.28"
Laptop hub - Power supply	160W (85-264VAC 50/60Hz to 24V/6.67A DC)
Laptop hub - Weight	580 g (1.28 lb)
Package contents	1x TOGGLE ROOMS XT – ROOM PC device 1x TOGGLE ROOMS XT – LAPTOP device 1x USB-C to USB-C cable – 1.8 m /6 ft. 1x USB 3.0 cable (USB-A to USB-B) – 1 m/3 ft. 3x terminal block 4-pos 4x mounting brackets 8x M2.5 mounting screws for brackets on product 8x screws for Toggle Rooms devices for table/wall mount 1x power supply 85-264VAC 50/60Hz to 24V/6.67A DC for a LAPTOP hub 1x power supply 85-264VAC 50/60Hz to 24V/1.5A DC for a ROOM PC hub 2x international adapters included in the box (USA/CA or EU/UK/AU/BIS) 1x Quick Start Guide / Thank You card 4x PSU mounting bracket 8 x screws for PSU table/wall mount 8 x rubber feet
Operating temperature	0°C to 45°C / 32°F to 113°F
Storage temperature	-40°C to 105°C / -40°F to 221°F
Relative humidity	0% to 90% non-condensing
Mounting options	Ability to mount under the table or on a wall

**TECHNICAL SPECIFICATIONS - CONT.**

INFORMATION	
UPC code - US & CAN	051497418717
UPC code - International market EU/UK/AU/BIS	051497418724
Origin	Canada
Warranty	5 years: Products purchased by the end-user after August 1, 2024

CERTIFICATIONS	
Certifications device	FCC, CE, UKCA, RoHS, IEC62368, SoV
Certifications power supply -100W	FCC, CE, UKCA, CB, CB IEC62368-1:2018, UL, TUV, Test report
Certifications power supply -36W	FCC, CE, UKCA, CB, UL, TUV, EMC
TAA-compliant	Yes

For technical support, contact us at [support@inogeni.com](mailto:support@inogeni.com)

Copyright © 2025/03 INOGENI | All Rights Reserved. INOGENI name and logo are trademarks or registered trademarks of INOGENI. Use of this product is subject to the terms and conditions of the license and limited warranty in effect at the time of purchase. Product specifications can change without notice.

**inogeni.com**

This sales sheet is constantly being updated. Please make sure that you have the latest version by regularly visiting [inogeni.com](https://inogeni.com)